

pneumatic valve

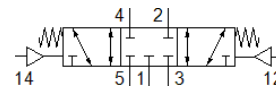
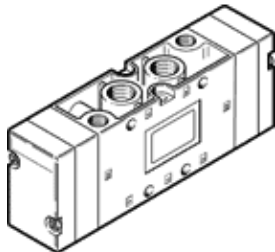
VL-5/3G-3/8-B

Part number: 14950
Classic - do not use for new projects

FESTO

5/3-way function, centre position closed

Modern alternatives can be found by entering the first four characters of the type code in the search field.



Data sheet

Feature	Value
Valve function	5/3 closed
Type of actuation	pneumatic
Width	40 mm
Standard nominal flow rate	2,000 l/min
Operating pressure MPa	-0.09 ... 1 MPa
Operating pressure	-0.9 ... 10 bar
Design structure	Piston slide
Type of reset	mechanical spring
Nominal size	12 mm
Grid dimension	41 mm
Exhaust-air function	throttleable
Sealing principle	soft
Assembly position	Any
Manual override	None
Type of piloting	direct
Pilot air supply	external
Flow direction	reversible
Overlap	Positive overlap
Pilot pressure MPa	0.3 ... 1 MPa
Pilot pressure	3 ... 10 bar
Max. switching frequency	3 Hz
Switching time off	28 ms
Switching time on	7 ms
Switching time reversal	54 ms
Operating medium	Compressed air in accordance with ISO8573-1:2010 [7:4:4]
Note on operating and pilot medium	Lubricated operation possible (subsequently required for further operation)
Corrosion resistance classification CRC	1 - Low corrosion stress
PWIS conformity	VDMA24364-B1/B2-L
Storage temperature	-40 ... 60 °C
Medium temperature	-10 ... 60 °C
Pilot medium	Compressed air in accordance with ISO8573-1:2010 [7:4:4]
Ambient temperature	-10 ... 60 °C
Product weight	680 g
Mounting type	On PR manifold with through hole Optional
Pilot air port 12	G1/8
Pilot air port 14	G1/8
Pneumatic connection, port 1	G3/8
Pneumatic connection, port 2	G3/8
Pneumatic connection, port 3	G3/8

Feature	Value
Pneumatic connection, port 4	G3/8
Pneumatic connection, port 5	G3/8
Materials note	Conforms to RoHS
Material seals	NBR
Material housing	Aluminium die cast