

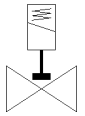
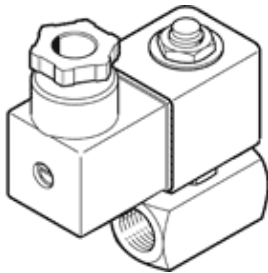
# solenoid valve

## VZWD-L-M22C-M-N18-20-V-3AP4-15

Part number: 1492022

**FESTO**

Directly actuated, NPT1/8" connection.



## Data sheet

Feature	Value
Design structure	Directly actuated poppet valve
Type of actuation	electrical
Sealing principle	soft
Assembly position	Any
Mounting type	Line installation
Process valve connection	1/8 NPT
Electrical connection	Plug pattern type A to EN 175301-803 Plug to EN 175301-803 Cubic design
Nominal size	2 mm
Valve function	2/2 closed, monostable
Manual override	None
Flow direction	non reversible
Medium	Compressed air in accordance with ISO8573-1:2010 [7:4:4] Inert gases Mineral oil Water Neutral fluids Other media on request
Nominal pressure of process valve	100
Differential pressure (MPa)	0 MPa
Differential pressure	0 bar
Differential pressure (psi)	0 psi
Characteristic coil data	230 V AC: 50/60 Hz, pick-up power 10.5 VA, holding power 7.6 VA
Insulation class	F
Permissible voltage fluctuation	+/- 10 %
Duty cycle	100 %
Type of reset	mechanical spring
Type of piloting	direct
Pressure of medium	0 ... 1.5 MPa
Medium pressure	0 ... 15 bar
Pressure of medium psi	0 ... 217.5 psi
Max. viscosity	22 mm <sup>2</sup> /s
Medium temperature	-10 ... 80 °C
Ambient temperature	-10 ... 35 °C
Leak rate in accordance with EN 12266-1	A
Flow rate Kv	0.13 m <sup>3</sup> /h
Standard nominal flow rate	140 l/min
Switching time on	20 ms
Switching time off	18 ms
Materials note	Conforms to RoHS
PWIS conformity	VDMA24364 zone III
Material housing	Brass

Feature	Value
Material number for housing	CW614N
Material seals	FPM
Product weight	300 g
CE mark (see declaration of conformity)	to EU directive low-voltage devices
UKCA marking (see declaration of conformity)	To UK instructions for electrical equipment
Protection class	IP65
Corrosion resistance classification CRC	1 - Low corrosion stress