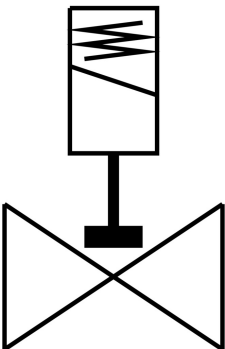


# Solenoid valve VZWD-L-M22C-M-G18-15-V-3AP4-30

Part number: 1491982



## Data sheet

| Feature                          | Value  |
|----------------------------------|--|
| Design                           | Directly actuated poppet valve   |
| Type of actuation                | Electric   |
| Sealing principle                | Soft   |
| Mounting position                | optional   |
| Type of mounting                 | In-line installation   |
| Connection Process valve         | G1/8   |
| Electrical connection            | Type A<br>Plugs<br>To EN 175301-803<br>Square design   |
| Nominal size                     | 1.5 mm   |
| Valve function                   | 2/2-way, closed, monostable  |
| Manual override                  | None   |
| Flow direction                   | Non-reversible   |
| Medium                           | Compressed air to ISO 8573-1:2010 [7:4:4]<br>Inert gases<br>Mineral oil<br>Water<br>Neutral fluids<br>Other media on request |
| Nominal pressure PN              | 50   |
| Pressure difference              | 0 MPa<br>0 bar<br>0 psi  |
| Characteristic coil data         | 230 V AC: 50/60 Hz, pick-up power 10.5 VA, holding power 7.6 VA  |
| Insulation material class        | F  |
| Permissible voltage fluctuations | +/- 10 %   |
| Duty cycle                       | 100%   |
| Type of reset                    | Mechanical spring  |

| Feature                                    | Value  |
|--|--|
| Type of piloting                           | Direct   |
| Medium pressure                            | 0 MPa...3 MPa<br>0 bar...30 bar<br>0 psi...435 psi |
| Max. viscosity                             | 22 mm <sup>2</sup> /s                              |
| Media temperature                          | -10 °C...80 °C                                     |
| Ambient temperature                        | -10 °C...35 °C                                     |
| Leakage rate to EN 12266-1                 | A  |
| Flow rate Kv                               | 0.09 m <sup>3</sup> /h                             |
| Standard nominal flow rate                 | 95 l/min   |
| Switching time on                          | 25 ms  |
| Switching time off                         | 10 ms  |
| Note on materials                          | RoHS-compliant                                     |
| LABS (PWIS) conformity                     | VDMA24364 zone III                                 |
| Material housing                           | Brass  |
| Material number housing                    | CW614N   |
| Material seals                             | FPM  |
| Product weight                             | 300 g  |
| CE mark (see declaration of conformity)    | To EU Low Voltage Directive                        |
| CE marking (see declaration of conformity) | To UK regulations for electrical equipment         |
| Degree of protection                       | IP65   |
| Corrosion resistance class CRC             | 1 - Low corrosion stress                           |