

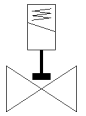
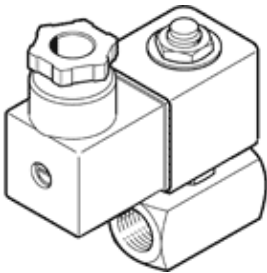
# solenoid valve

## VZWD-L-M22C-M-G18-60-V-2AP4-4

Part number: 1491917

FESTO

Directly actuated, G1/8" connection.



### Data sheet

| Feature                                 | Value   |
|---|---|
| Design structure                        | Directly actuated poppet valve  |
| Type of actuation                       | electrical  |
| Sealing principle                       | soft  |
| Assembly position                       | Any   |
| Mounting type                           | Line installation   |
| Process valve connection                | G1/8  |
| Electrical connection                   | Plug pattern type A to EN 175301-803<br>Plug<br>to EN 175301-803<br>Cubic design  |
| Nominal size                            | 6 mm  |
| Valve function                          | 2/2 closed, monostable  |
| Manual override                         | None  |
| Flow direction                          | non reversible  |
| Medium                                  | Compressed air in accordance with ISO8573-1:2010 [7:4:4]<br>Inert gases<br>Mineral oil<br>Water<br>Neutral fluids<br>Other media on request |
| Nominal pressure of process valve       | 100   |
| Differential pressure (MPa)             | 0 MPa   |
| Differential pressure                   | 0 bar   |
| Differential pressure (psi)             | 0 psi   |
| Characteristic coil data                | 110 V AC: 50/60 Hz, pick-up power 19 VA, holding power 16 VA  |
| Insulation class                        | F   |
| Permissible voltage fluctuation         | +/- 10 %  |
| Duty cycle                              | 100 %   |
| Type of reset                           | mechanical spring   |
| Type of piloting                        | direct  |
| Pressure of medium                      | 0 ... 0.4 MPa   |
| Medium pressure                         | 0 ... 4 bar   |
| Pressure of medium psi                  | 0 ... 58 psi  |
| Max. viscosity                          | 22 mm <sup>2</sup> /s   |
| Medium temperature                      | -10 ... 80 °C   |
| Ambient temperature                     | -10 ... 35 °C   |
| Leak rate in accordance with EN 12266-1 | A   |
| Flow rate Kv                            | 0.4 m <sup>3</sup> /h   |
| Standard nominal flow rate              | 430 l/min   |
| Switching time on                       | 20 ms   |
| Switching time off                      | 18 ms   |
| Materials note                          | Conforms to RoHS  |
| PWIS conformity                         | VDMA24364 zone III  |
| Material housing                        | Brass   |

| Feature                                      | Value                                       |
|--|---|
| Material number for housing                  | CW614N                                      |
| Material seals                               | FPM   |
| Product weight                               | 600 g                                       |
| CE mark (see declaration of conformity)      | to EU directive low-voltage devices         |
| UKCA marking (see declaration of conformity) | To UK instructions for electrical equipment |
| Protection class                             | IP65  |
| Corrosion resistance classification CRC      | 1 - Low corrosion stress                    |