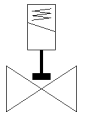
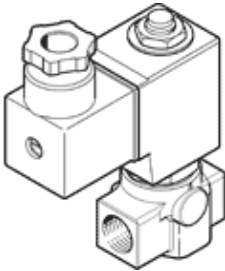


# solenoid valve VZWD-L-M22C-M-G14-25-V-1P4-22

Part number: 1491843

**FESTO**

Directly actuated, G1/4" connection.



## Data sheet

| Feature                                 | Value   |
|---|---|
| Design structure                        | Directly actuated poppet valve  |
| Type of actuation                       | electrical  |
| Sealing principle                       | soft  |
| Assembly position                       | Any   |
| Mounting type                           | Line installation   |
| Process valve connection                | G1/4  |
| Electrical connection                   | Plug pattern type A to EN 175301-803<br>Plug<br>to EN 175301-803<br>Cubic design  |
| Nominal size                            | 2.5 mm  |
| Valve function                          | 2/2 closed, monostable  |
| Manual override                         | None  |
| Flow direction                          | non reversible  |
| Medium                                  | Compressed air in accordance with ISO8573-1:2010 [7:4:4]<br>Inert gases<br>Mineral oil<br>Water<br>Neutral fluids<br>Other media on request |
| Nominal pressure of process valve       | 100   |
| Differential pressure (MPa)             | 0 MPa   |
| Differential pressure                   | 0 bar   |
| Differential pressure (psi)             | 0 psi   |
| Characteristic coil data                | 24 V DC: 11 W   |
| Insulation class                        | H   |
| Permissible voltage fluctuation         | +/- 10 %  |
| Duty cycle                              | 100 %   |
| Type of reset                           | mechanical spring   |
| Type of piloting                        | direct  |
| Pressure of medium                      | 0 ... 2.2 MPa   |
| Medium pressure                         | 0 ... 22 bar  |
| Pressure of medium psi                  | 0 ... 319 psi   |
| Max. viscosity                          | 22 mm <sup>2</sup> /s   |
| Medium temperature                      | -10 ... 80 °C   |
| Ambient temperature                     | -10 ... 35 °C   |
| Leak rate in accordance with EN 12266-1 | A   |
| Flow rate Kv                            | 0.16 m <sup>3</sup> /h  |
| Standard nominal flow rate              | 170 l/min   |
| Switching time on                       | 20 ms   |
| Switching time off                      | 18 ms   |
| Materials note                          | Conforms to RoHS  |
| PWIS conformity                         | VDMA24364 zone III  |
| Material housing                        | Cast brass  |

| Feature                                 | Value                    |
|---|--------------------------|
| Material number for housing             | CW617N                   |
| Material seals                          | FPM                      |
| Product weight                          | 550 g                    |
| Protection class                        | IP65                     |
| Corrosion resistance classification CRC | 1 - Low corrosion stress |