

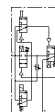
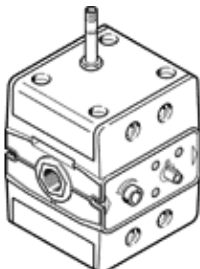
# Solenoid valve

## MFHE-3-3/8

Part number: 12908

**FESTO**

On-off valve for delayed pressure build-up, with manual override.  
Solenoid coil and plug socket not included.



## Data sheet

Feature	Value
Design structure	Poppet seat
Flow direction	non reversible
Sealing principle	soft
Exhaust-air function	not throttleable
Type of reset	mechanical spring
Type of piloting	direct
Valve function	3/2 closed, monostable
Operating pressure	2 ... 10 bar
Standard nominal flow rate	2,100 l/min
Switching time off	94 ms
Switching time on	20 ms
Medium temperature	-10 ... 60 °C
Ambient temperature	-5 ... 40 °C
Mounting type	with through hole
Pneumatic connection, port 1	G3/8
Pneumatic connection, port 2	G3/8
Pneumatic connection, port 3	G3/8
Nominal size	9 mm