

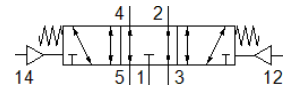
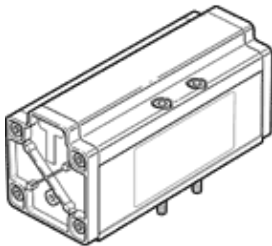
# pneumatic valve

## VL-5/3E-3/4-D-4

Part number: 12464

**FESTO**

With mounting screws, without sub-base



## Data sheet

Feature	Value
Valve function	5/3 exhausted
Type of actuation	pneumatic
Width	76 mm
Standard nominal flow rate	4,800 l/min
Operating pressure	-0.9 ... 16 bar
Design structure	Piston slide
Type of reset	mechanical spring
Nominal size	18 mm
Grid dimension	82 mm
Exhaust-air function	throttleable
Sealing principle	soft
Assembly position	Any
Conforms to standard	ISO 5599-1
Manual override	None
ISO code	408
Type of piloting	direct
Flow direction	reversible
Overlap	Positive overlap
Pilot pressure	3 ... 16 bar
Switching time off	170 ms
Switching time on	50 ms
Operating medium	Compressed air in accordance with ISO8573-1:2010 [7:4:4]
Note on operating and pilot medium	Lubricated operation possible (subsequently required for further operation)
PWIS conformity	VDMA24364-B1/B2-L
Medium temperature	-10 ... 60 °C
Sound pressure level	85 dB(A)
Pilot medium	Compressed air in accordance with ISO8573-1:2010 [7:4:4]
Ambient temperature	-10 ... 60 °C
Product weight	2,000 g
Mounting type	On sub-base With through-hole and screw
Pilot air port 12	Connection plate size 4 as per ISO 5599-1
Pilot air port 14	Connection plate size 4 as per ISO 5599-1
Pneumatic connection, port 1	Connection plate size 4 as per ISO 5599-1
Pneumatic connection, port 2	Connection plate size 4 as per ISO 5599-1
Pneumatic connection, port 3	Connection plate size 4 as per ISO 5599-1
Pneumatic connection, port 4	Connection plate size 4 as per ISO 5599-1
Pneumatic connection, port 5	Connection plate size 4 as per ISO 5599-1
Materials note	Conforms to RoHS
Material seals	NBR
Material housing	Aluminium