

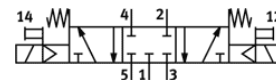
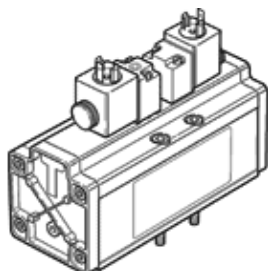
# solenoid valve

## MDH-5/3G-3/4-D-4-24DC

Part number: 12459

FESTO

With pilot valve and manual override, no socket connector



## Data sheet

Feature	Value
Valve function	5/3 closed
Type of actuation	electrical
Width	76 mm
Standard nominal flow rate	4,800 l/min
Operating pressure	3 ... 16 bar
Design structure	Piston slide
Type of reset	mechanical spring
Protection class	IP65
Nominal size	18 mm
Grid dimension	82 mm
Exhaust-air function	throttleable
Sealing principle	soft
Assembly position	Any
Conforms to standard	ISO 5599-1
Manual override	Pushing
ISO code	456
Type of piloting	Piloted
Pilot air supply	Internal
Flow direction	non reversible
Overlap	Positive overlap
Switching time off	290 ms
Switching time on	85 ms
Duty cycle	100 %
Max. positive test pulse with logic 0	4,300 µs
Max. negative test pulse with logic 1	2,100 µs
Characteristic coil data	24 V DC: 6.8 W 48 V AC: 50/60 Hz, pick-up power 14.5 VA, holding power 9.9 VA
Operating medium	Compressed air in accordance with ISO8573-1:2010 [7:4:4]
Note on operating and pilot medium	Lubricated operation possible (subsequently required for further operation)
PWIS conformity	VDMA24364-B1/B2-L
Medium temperature	-10 ... 60 °C
Sound pressure level	85 dB(A)
Ambient temperature	-10 ... 50 °C
Product weight	2,600 g
Electrical connection	Per DIN EN 175301-803
Mounting type	On sub-base With through-hole and screw
Pilot exhaust port 82	M5
Pilot exhaust port 84	M5
Pneumatic connection, port 1	Connection plate size 4 as per ISO 5599-1
Pneumatic connection, port 2	Connection plate size 4 as per ISO 5599-1
Pneumatic connection, port 3	Connection plate size 4 as per ISO 5599-1
Pneumatic connection, port 4	Connection plate size 4 as per ISO 5599-1
Pneumatic connection, port 5	Connection plate size 4 as per ISO 5599-1
Materials note	Conforms to RoHS
Material seals	NBR
Material housing	Aluminium