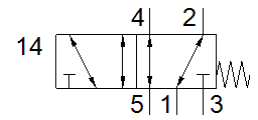
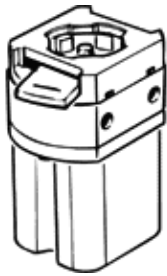


# front panel valve SV-5-M5-B

Part number: 11914

FESTO



## Data sheet

Feature	Value
Valve function	5/2 monostable
Type of actuation	manual
Standard nominal flow rate	95 l/min
Operating pressure MPa	0 ... 0.8 MPa
Operating pressure	0 ... 8 bar
Design structure	Poppet valve with spring return
Type of reset	mechanical spring
Nominal size	2.3 mm
Sealing principle	soft
Assembly position	Any
Type of piloting	direct
Overlap	Positive overlap
Operating medium	Compressed air in accordance with ISO8573-1:2010 [-:::]
PWIS conformity	VDMA24364-B1/B2-L
Ambient temperature	-10 ... 60 °C
Actuating force	17 N
Product weight	53 g
Mounting type	Front panel installation with through hole
Pneumatic connection, port 1	M5
Material seals	NBR
Material housing	Plastic Brass