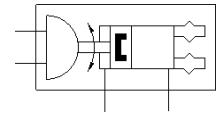
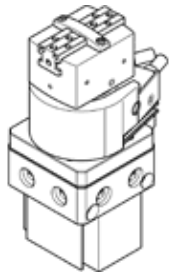


swivel/gripper unit HGDS-PP-12-YSRT-A-B

Part number: 1187957

FESTO

With hydraulic cushioning



Data sheet

Feature	Value
Size	12
Rotation angle adjustment range	0 ... 210 deg
Stroke per gripper jaw	2.5 mm
Max. angular gripper jaw backlash ax,ay	0.1 deg
Max. gripper jaw backlash Sz	0.02 mm
Swivel angle	210 deg
Number of gripper fingers	2
Cushioning of swivel drive	CC: Shock absorber at both ends
Assembly position	Any
Fine adjustment of swivel drive	-2.5 deg
Mode of operation	double-acting
Gripper function	Parallel
Design structure	Swivel drive With parallel gripper and gripper drive
Position detection, gripper	with proximity sensor
Position detection, swivel drive	with proximity sensor
Operating pressure	3 ... 8 bar
Max. swivel frequency at 0.6 MPa (6 bar, 87 psi)	1.5 Hz
Min. opening time at 0.6 MPa (6 bar, 87 psi)	40 ms
Min. closing time at 0.6 MPa (6 bar, 87 psi)	60 ms
Operating medium	Compressed air in accordance with ISO8573-1:2010 [7:4:4]
Note on operating and pilot medium	Lubricated operation possible (subsequently required for further operation)
Corrosion resistance classification CRC	2 - Moderate corrosion stress
PWIS conformity	VDMA24364-B2-L
Ambient temperature	5 ... 60 °C
Gripping force per gripper jaw at 0.6 MPa (6 bar, 87 psi) opening	42 N
Total gripping force at 0.6 MPa (6 bar, 87 psi), opening	84 N
Gripping force per gripper jaw at 0.6 MPa (6 bar, 87 psi) closing	37 N
Total gripping force at 0.6 MPa (6 bar, 87 psi), closing	74 N
Max. force on gripper jaw Fz static	90 N
Max. torque at gripper Mx static	6 Nm
Max. torque at gripper My static	6 Nm
Max. torque at gripper Mz static	6 Nm
Theoretical torque at 0.6 MPa (6 bar, 87 psi)	0.85 Nm
Product weight	505 g
Max. mass per external gripper finger	30 g
Mounting type	Internal thread and centring sleeve With through-hole and centring sleeve With dovetail slot Optional
Pneumatic connection	M5
Materials note	Conforms to RoHS
Material of drive shaft	Steel

Feature	Value
Material cover	Aluminium POM
Material seals	NBR
Material housing	Wrought Aluminium alloy
Material gripper jaws	High alloy steel, non-corrosive