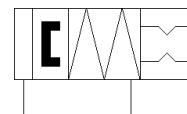
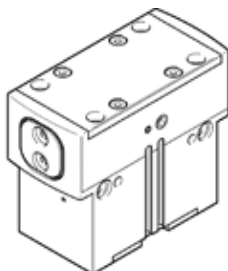


parallel gripper HGPD-40-A-G2

Part number: 1132950

FESTO

With gripping force backup when closing...-G2.



Data sheet

Feature	Value
Size	40
Stroke per gripper jaw	10 mm
Max. replacement accuracy	≤ 0.2 mm
Max. angular gripper jaw backlash ax,ay	≤ 0.1 deg
Max. gripper jaw backlash Sz	≤ 0.02 mm
Rotationally symmetrical	≤ 0.2 mm
Repetition accuracy, gripper	≤ 0.05 mm
Number of gripper fingers	2
Drive system	pneumatic
Assembly position	Any
Mode of operation	double-acting
Gripper function	Parallel
Gripper force back-up	On closing
Design structure	Inclined plane guided motion sequence
Position detection	For proximity sensor
Operating pressure	4 ... 8 bar
Operating pressure, sealing air	0 ... 0.5 bar
Max. operating frequency of gripper	≤ 2 Hz
Min. opening time at 0.6 MPa (6 bar, 87 psi)	143 ms
Min. closing time at 0.6 MPa (6 bar, 87 psi)	71 ms
Max. mass per external gripper finger	445 g
Operating medium	Compressed air in accordance with ISO8573-1:2010 [7:4:4]
Note on operating and pilot medium	Lubricated operation possible (subsequently required for further operation)
Corrosion resistance classification CRC	2 - Moderate corrosion stress
PWIS conformity	VDMA24364-B2-L
Protection class	IP65
Ambient temperature	5 ... 60 °C
Mass moment of inertia	14.09 kgcm ²
Max. torque at gripper Mx static	70 Nm
Max. torque at gripper My static	45 Nm
Max. torque at gripper Mz static	35 Nm
Lubrication interval for guide components	5,000,000 Mio SP
Product weight	1,223 g
Mounting type	Internal thread and centring sleeve With through-hole and centring sleeve With through-hole and dowel pin With internal thread and dowel pin Optional
Pneumatic connection, sealing air	M5
Pneumatic connection	M5
Materials note	Conforms to RoHS
Material cover cap	High alloy steel, non-corrosive
Material housing	Anodised aluminium
Material gripper jaws	Steel, hardened