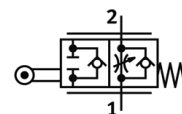
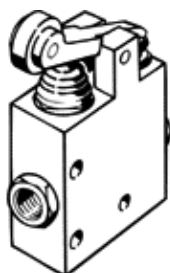


One-way flow control valve GGO-1/8

Part number: 10891

FESTO

With roller lever and adjustable basic flow rate
Products to be discontinued. Available until 2011.



Data sheet

Feature	Value
Valve function	One-way flow control function
Pneumatic connection, port 1	G1/8
Pneumatic connection, port 2	G1/8
Type of actuation	mechanical
Adjusting element	Roller lever
Mounting type	with through hole
Standard nominal flow rate in flow control direction	280 l/min
Standard nominal flow rate in non-return direction	240 ... 350 l/min
Operating pressure	0.3 ... 10 bar
Ambient temperature	-10 ... 60 °C
Materials information, housing	Wrought Aluminium alloy
Operating medium	Compressed air, filtered, unlubricated Filtered, lubricated air
Assembly position	Any
Storage temperature	-10 ... 60 °C
Medium temperature	-10 ... 60 °C
Product weight	400 g
Materials note	Contains PWIS substances
Materials information for seals	NBR