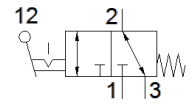


swivel lever valve RW/O-3-PK-3

Part number: 10750

FESTO



Data sheet

| Feature | Value |
|------------------------------|---|
| Valve function | 3/2 open/closed, monostable |
| Type of actuation | mechanical |
| Standard nominal flow rate | 80 l/min |
| Operating pressure | 0 ... 8 bar |
| Design structure | Piston seat |
| Nominal size | 2.5 mm |
| Type of piloting | direct |
| Operating medium | Compressed air in accordance with ISO8573-1:2010 [-:::] |
| PWIS conformity | VDMA24364-B1/B2-L |
| Ambient temperature | -10 ... 60 °C |
| Mounting type | with through hole |
| Pneumatic connection, port 1 | PK-3 |
| Pneumatic connection, port 2 | PK-3 |
| Pneumatic connection, port 3 | PK-3 |
| Material seals | NBR |
| Material housing | POM |