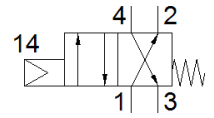
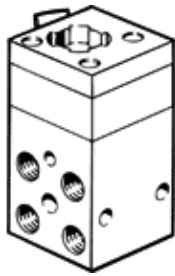


front panel valve SVS-4-1/8

Part number: 10192

FESTO



Data sheet

Feature	Value
Valve function	4/2 monostable
Type of actuation	mechanical
Standard nominal flow rate	120 l/min
Operating pressure MPa	0.35 ... 0.8 MPa
Operating pressure	3.5 ... 8 bar
Design structure	Piston seat
Type of reset	mechanical spring
Sealing principle	soft
Assembly position	Any
Type of piloting	direct
Flow direction	non reversible
Operating medium	Compressed air in accordance with ISO8573-1:2010 [-:-:-]
PWIS conformity	VDMA24364-B1/B2-L
Ambient temperature	-10 ... 60 °C
Actuating force	8 N
Mounting type	with through hole
Pneumatic connection, port 1	G1/8
Pneumatic connection, port 2	G1/8
Pneumatic connection, port 3	G1/8
Pneumatic connection, port 4	G1/8
Material cover	POM
Material seals	NBR TPE-U(PU)
Material housing	Aluminium