

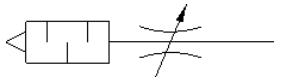
exhaust air flow control valve

GRE-1/4-NPT

Part number: 10058

FESTO

With sintered metal silencer.



Data sheet

Feature	Value
Valve function	Flow control – silencer function
Pneumatic connection, port 1	1/4 NPT
Adjusting element	Slotted head screw
Mounting type	Threaded
Standard flow rate 0.6-10 MPa (6-10 bar, 87-10 psi)	0 ... 996 l/min
Operating pressure	0 ... 10 bar
Ambient temperature	-10 ... 70 °C
Operating medium	Compressed air in accordance with ISO8573-1:2010 [7:-:-]
Note on operating and pilot medium	Lubricated operation possible (subsequently required for further operation)
PWIS conformity	VDMA24364-B1/B2-L
Medium temperature	-10 ... 70 °C