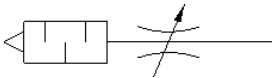


# exhaust air flow control valve GRE-1/8-NPT

Part number: 10057



With sintered metal silencer.



## Data sheet

Feature	Value
Valve function	Flow control – silencer function
Pneumatic connection, port 1	1/8 NPT
Adjusting element	Slotted head screw
Mounting type	Threaded
Standard flow rate 0.6→0 MPa (6→0 bar, 87→0 psi)	0 ... 520 l/min
Operating pressure	0 ... 10 bar
Ambient temperature	-10 ... 70 °C
Operating medium	Compressed air in accordance with ISO8573-1:2010 [7:-:-]
Note on operating and pilot medium	Lubricated operation possible (subsequently required for further operation)
PWIS conformity	VDMA24364-B1/B2-L
Medium temperature	-10 ... 70 °C
Materials note	Conforms to RoHS