

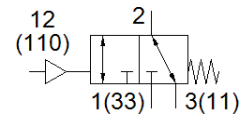
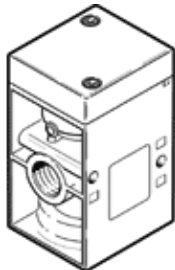
pneumatic valve

VL/O-3-3/4

Part number: 10049

FESTO

Depending on the choice of connection, normally-open or normally-closed function.



Data sheet

Feature	Value
Valve function	3/2 open/closed, monostable
Type of actuation	pneumatic
Width	68 mm
Standard nominal flow rate	7,500 l/min
Operating pressure MPa	-0.095 ... 1 MPa
Operating pressure	-0.95 ... 10 bar
Design structure	Poppet seat
Type of reset	mechanical spring
Nominal size	19 mm
Exhaust-air function	throttleable
Sealing principle	soft
Assembly position	Any
Type of piloting	direct
Pilot air supply	external
Flow direction	reversible
Overlap	Underlap
Pilot pressure MPa	0.1 ... 1 MPa
Pilot pressure	1 ... 10 bar
Switching time off	35 ms
Switching time on	12 ms
Operating medium	Compressed air in accordance with ISO8573-1:2010 [7:4:4]
Note on operating and pilot medium	Lubricated operation possible (subsequently required for further operation)
Corrosion resistance classification CRC	1 - Low corrosion stress
PWIS conformity	VDMA24364-B1/B2-L
Storage temperature	-20 ... 60 °C
Medium temperature	-10 ... 60 °C
Pilot medium	Compressed air in accordance with ISO8573-1:2010 [7:4:4]
Ambient temperature	-10 ... 60 °C
Product weight	1,200 g
Electrical connection	Via F coil, must be ordered separately
Mounting type	on manifold rail with through hole Optional
Pilot air connection: 110	G1/4
Pilot air port 12	G1/4
Pneumatic connection, port 1	G3/4
Pneumatic connection, 11	G3/4
Pneumatic connection, port 2	G3/4
Pneumatic connection, port 3	G3/4
Pneumatic connection, 33	G3/4
Materials note	Conforms to RoHS
Material seals	NBR
Material housing	Aluminium die cast