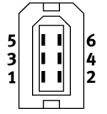
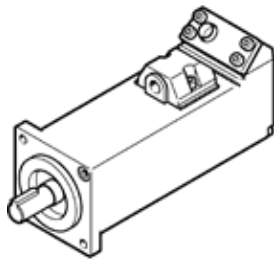


伺服馬達

EMMB-AS-60-04-K-S30M

料號: 8097185

FESTO



技術參數

特性	值
環境溫度	-15 ... 40 °C
Note on ambient temperature	Up to 60° C with derating of -1.5% per degree Celsius
Max. installation height	4,000 m
Note on max. installation height	As of 1,000 m, only with derating of -1.0% per 100 m
儲藏溫度	-20 ... 55 °C
相對空氣濕度	0 - 90 %
符合標準	IEC 60034
根據EN60034-1的熱量等級	F
Max. winding temperature	155 °C
根據EN60034-1的速率等級	S1
溫度監控	Digital motor temperature transmission via Nikon A format
Motor type to EN 60034-7	IM B5 IM V1 IM V3
裝配位置	任何
防護等級	IP65
Note on degree of protection	IP40 motor shaft without RWDR IP54 motor shaft with rotary shaft seal IP65 motor housing without connection
Concentricity, coaxiality, axial runout to DIN SPEC 42955	N
Balance quality	G 2,5
Storage lifetime under nominal conditions	20,000 h
Woodruff 軸設計關鍵	DIN 6885 A 5 x 5 x 16
Electrical connection 1, connection type	插頭
Electrical connection 1, connection technology	Connection pattern RE
Electrical connection 1, number of pins/wires	6
污染程度	2
材料備註	符合 RoHS
耐腐蝕等級 CRC	0 - No corrosion stress
PWIS conformity	VDMA24364 zone III
耐振動	傳送應用測試在安全等級 2 符合 FN 942017-4 及 EN 60068-2-6
耐衝擊	Shock test with severity level 2 in accordance with FN 942017-5 and EN 60068-2-27
授權	c UL us - Recognized (OL)
CE 符號 (參見符合的標準)	根據 EU-EMV 指導原則 根據 EU 低電壓設備指導原則 in accordance with EU RoHS directive
UKCA marking (see declaration of conformity)	To UK instructions for electrical equipment To UK instructions for EMC To UK RoHS instructions
認證核發部門	UL E342973
額定工作電壓 DC	300 V
額定電壓 DC	300 V
Type of winding switch	Star inside
Number of pole pairs	3

特性	值
靜止扭矩	1.4 Nm
額定扭矩	1.27 Nm
峰值 (最大) 扭矩	3.81 Nm
額定擺動速度	3,000 1/min
最高速度	6,000 1/min
Max. mechanical speed	10,000 1/min
額定馬達功率	400 W
連續的開路電流	2.6 A
額定馬達電流	2.4 A
峰值 (最大) 電流	7.2 A
馬達恆定	0.562 Nm/A
Voltage constant, phase-to-phase	34 mVmin
Phase-phase winding resistance	5.8 Ohm
Phase-phase winding inductance	11.5 mH
Electric time constant	1.98 ms
Measuring flange	255 x 255 x 8, aluminium
斷電時轉動慣量總和	0.405 kgcm ²
產品重量	1,600 g
容許的軸向驅動軸負載	90 N
容許的徑向軸負載	180 N
轉子位置感測器	Absolute multi-turn encoder
Rotor position sensor, manufacturer designation	MAR-MX50AHN00
Rotor position sensor, absolute detectable revolutions	65,536
Rotary position encoder interface	Nikon A format
Rotary position encoder measuring principle	光學
Rotor position sensor, DC operating voltage	5 V
Rotor position sensor, DC operating voltage range	4.75 ... 5.25 V
Rotor position sensor, position values per revolution	1,048,576
轉子位置編碼器起動裝置	20 Bit
Rotor position sensor, system accuracy of angle measurement	-120 ... 120 arcsec