

Toggle lever valve

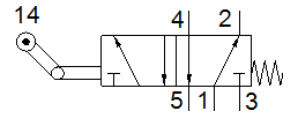
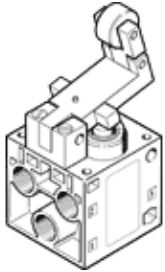
L-5-1/4-B

Part number: 8993

FESTO

With idle return and barbed fitting for 3 mm tubing. Normally-open or normally-closed function depending on choice of connection.

This type is suitable for vacuum.



Data sheet

Feature	Value
Valve function	5/2 monostable
Type of actuation	mechanical
Standard nominal flow rate	550 l/min
Working pressure	-0.95 ... 10 bar
Design structure	Poppet seat
Nominal size	7 mm
Type of piloting	direct
PWIS conformity	VDMA24364-B1/B2-L
Ambient temperature	-10 ... 60 °C
Actuating force	71.5 N
Product weight	360 g
Mounting type	with through hole
Pneumatic connection, port 1	G1/4
Pneumatic connection, port 2	G1/4
Pneumatic connection, port 3	G1/4
Pneumatic connection, port 4	G1/4
Pneumatic connection, port 5	G1/4
Material seals	NBR
Material housing	Aluminum die cast