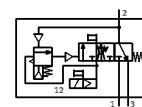
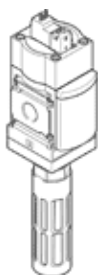


Soft start/quick exhaust valve MS6-SV-1/2-C-10V24-S-AD7

Part number: 8172785

FESTO



Data sheet

Feature	Value
Series	MS
Size	6
Grid dimension	62 mm
Safety function	Exhausting Prevention of unexpected start-up (pressurisation)
Performance level (PL)	Exhausting/category 1, Performance Level c Prevention of unexpected start-up (pressurisation)/category 1, Performance Level e
Note on forced dynamisation	Switching frequency min. 1/month
Design structure	Piston slide
Freedom from overlap	Yes
Type of actuation	electrical
Pilot air supply	Internal
Sealing principle	soft
Exhaust-air function	not throttleable
Manual override	On pilot-solenoid valves: non-detenting with pressure build-up and exhaust valve: detenting, self-resetting
Type of reset	mechanical spring
Type of piloting	Piloted
Valve function	3/2 closed, monostable Pressure build-up function
Operating pressure MPa	0.3 ... 1 MPa
Working pressure	3 ... 10 bar
Pressure gauge	with pressure sensor with operational status indicator
C value	23.2 l/sbar
b value	0.4
Standard nominal flow rate	5,700 l/min
Standard flow rate exhaust 0.6->0 MPa (6->0 bar, 87->0 psi)	7,600 l/min
Switching time off	65 ms
Switching time on	370 ms
Duty cycle	100 %
Characteristic coil data	24 V DC: 1.8 W
Permissible voltage fluctuation	+/- 10 %
Operating medium	Compressed air in accordance with ISO8573-1:2010 [7:4:4]
Note on operating and pilot medium	Lubricated operation possible (subsequently required for further operation)
Corrosion resistance classification CRC	2 - Moderate corrosion stress
Materials note	Conforms to RoHS
PWIS conformity	VDMA24364-B1/B2-L
Protection class	IP65 with plug socket
Shock resistance	Shock test with severity level 2 in accordance with FN 942017-5 and EN 60068-2-27
Vibration resistance	Transport application test at severity level 2 in accordance with FN 942017-4 and EN 60068-2-6
CE symbol (see declaration of conformity)	according to EU machines guideline

Feature	Value
Food-safe	See Supplementary material information
Mounting type	Line installation with accessories Optional
Assembly position	Any
Product weight	1,006 g
Pneumatic connection, port 1	G1/2
Pneumatic connection, port 2	G1/2
Pneumatic connection, port 3	G3/4
Electrical connection	2-pin Plug pattern type C to EN 175301-803 Plug to EN 175301-803
Material housing	Aluminum die cast
Material seals	NBR
Material piston rod	High alloy steel, non-corrosive