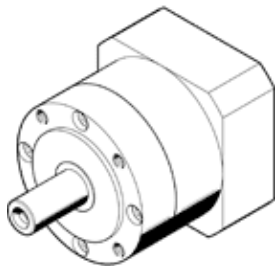


Gearbox

EMGA-120-P-G12-SAS-140

Part number: 8141760

FESTO



Data sheet

Feature	Value
Gear unit flange size	120 mm
Motor flange size	140 mm
Torsional backlash	0.15 deg
Type of gear unit	Planetary gear unit
Gear unit ratio	12:1
Max. input speed	6,500 1/min
Temperature range of gear unit	-25 ... 90 °C
PWIS conformity	VDMA24364-B2-L
Protection class	IP54
Continuous output torque	260 Nm
Mass moment of inertia of gear unit	2.224 kgcm ²
Max. output torque	520 Nm
Max. efficiency	96 %
Torsional resistance	22 Nm/arcmin
Product weight	9,000 g
Gear unit interface, output shaft	120G
Gear unit interface, drive shaft	140A
Materials note	Conforms to RoHS