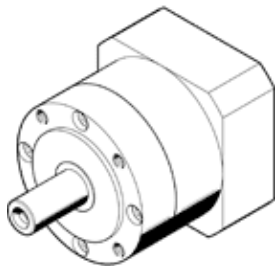


# Gearbox

## EMGA-120-P-G8-SAS-140

Part number: 8141759

FESTO



### Data sheet

Feature	Value
Gear unit flange size	120 mm
Motor flange size	140 mm
Torsional backlash	0.12 deg
Type of gear unit	Planetary gear unit
Gear unit ratio	8:1
Max. input speed	6,500 1/min
Temperature range of gear unit	-25 ... 90 °C
PWIS conformity	VDMA24364-B2-L
Protection class	IP54
Continuous output torque	120 Nm
Mass moment of inertia of gear unit	1.431 kgcm <sup>2</sup>
Max. output torque	380 Nm
Max. efficiency	97 %
Torsional resistance	18 Nm/arcmin
Product weight	7,000 g
Gear unit interface, output shaft	120G
Gear unit interface, drive shaft	140A
Materials note	Conforms to RoHS