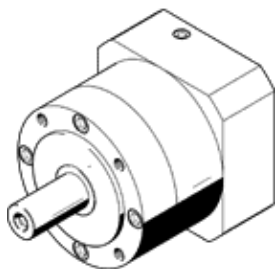


# Gearbox

## EMGA-120-P-G20-SAS-100

Part number: 8141755

FESTO



### Data sheet

Feature	Value
Gear unit flange size	120 mm
Motor flange size	100 mm
Torsional backlash	0.15 deg
Type of gear unit	Planetary gear unit
Gear unit ratio	20:1
Max. input speed	6,500 1/min
Temperature range of gear unit	-25 ... 90 °C
PWIS conformity	VDMA24364-B2-L
Protection class	IP54
Continuous output torque	260 Nm
Mass moment of inertia of gear unit	1.573 kgcm <sup>2</sup>
Max. output torque	416 Nm
Max. efficiency	96 %
Torsional resistance	22 Nm/arcmin
Product weight	8,000 g
Gear unit interface, output shaft	120G
Gear unit interface, drive shaft	100A
Materials note	Conforms to RoHS