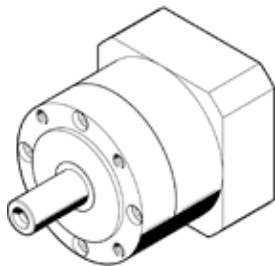


Gearbox

EMGA-120-P-G8-SAS-100

Part number: 8141753

FESTO



Data sheet

Feature	Value
Gear unit flange size	120 mm
Motor flange size	100 mm
Torsional backlash	0.12 deg
Type of gear unit	Planetary gear unit
Gear unit ratio	8:1
Max. input speed	6,500 1/min
Temperature range of gear unit	-25 ... 90 °C
PWIS conformity	VDMA24364-B2-L
Protection class	IP54
Continuous output torque	120 Nm
Mass moment of inertia of gear unit	1.431 kgcm ²
Max. output torque	192 Nm
Max. efficiency	97 %
Torsional resistance	18 Nm/arcmin
Product weight	6,000 g
Gear unit interface, output shaft	120G
Gear unit interface, drive shaft	100A
Materials note	Conforms to RoHS