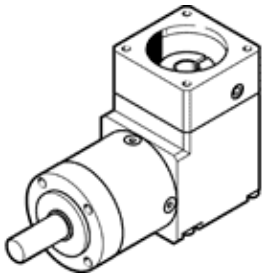


# Gearbox EMGA-40-A-G20-40P

Part number: 8141734

FESTO



## Data sheet

Feature	Value
Gear unit flange size	40 mm
Motor flange size	40 mm
Torsional backlash	0.41 deg
Type of gear unit	Right-angle gear unit
Gear unit ratio	20:1
Max. input speed	18,000 1/min
Temperature range of gear unit	-25 ... 90 °C
PWIS conformity	VDMA24364-B2-L
Protection class	IP54
Continuous output torque	20 Nm
Mass moment of inertia of gear unit	0.035 kgcm <sup>2</sup>
Max. output torque	32 Nm
Max. efficiency	92 %
Torsional resistance	0.8 Nm/arcmin
Product weight	600 g
Gear unit interface, output shaft	40G
Gear unit interface, drive shaft	40P
Materials note	Conforms to RoHS