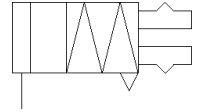
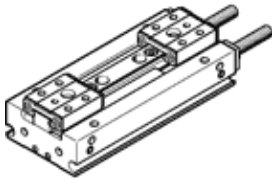


# Parallel gripper HPPF-8-32-A-S

Part number: 8134364

FESTO



## Data sheet

Feature	Value
Size	8
Total stroke	32 mm
Stroke per gripper jaw	16 mm
Max. angular gripper jaw backlash ax,ay	0 deg
Max. gripper jaw backlash Sz	0 mm
Repetition accuracy, gripper	≤ 0.03 mm
Number of gripper fingers	2
Drive system	pneumatic
Assembly position	Any
Mode of operation	double-acting
Cushioning	P: Flexible cushioning rings/plates at both ends
Gripper function	Parallel
Gripper force back-up	No
Design structure	Flat mounting of gripper fingers Rack and pinion guided motion sequence
Guide	Ball guide
Position detection	For proximity sensor
Variants	Recommended for production facilities for the manufacture of lithium-ion batteries
Total gripping force at 0.6 MPa (6 bar, 87 psi), opening	60.32 N
Total gripping force at 0.6 MPa (6 bar, 87 psi), closing	60.32 N
Operating pressure MPa	0.15 ... 0.7 MPa
Working pressure	1.5 ... 7 bar
Operating pressure	21.75 ... 101.5 psi
Max. operating frequency of gripper	2 Hz
Min. opening time at 0.6 MPa (6 bar, 87 psi)	46 ms
Min. closing time at 0.6 MPa (6 bar, 87 psi)	44 ms
Operating medium	Compressed air in accordance with ISO8573-1:2010 [7:4:4]
Note on operating and pilot medium	Lubricated operation possible (subsequently required for further operation)
Corrosion resistance classification CRC	0 - No corrosion stress
PWIS conformity	VDMA24364 zone III
RSBP classification to CD-0033	F1a
Cleanroom class	ISO class 7
Ambient temperature	-10 ... 60 °C
Gripping force per gripper jaw at 0.6 MPa (6 bar, 87 psi) opening	30.16 N
Gripping force per gripper jaw at 0.6 MPa (6 bar, 87 psi) closing	30.16 N
Max. force on gripper jaw Fz static	58 N
Max. torque Mx	0.6 Nm
Max. torque My	0.3 Nm
Max. torque Mz	0.3 Nm
Product weight	135 g
Mounting type	Direct mounting via through-holes Direct mounting via threads
Pneumatic connection	M3

Feature	Value
Materials note	Conforms to RoHS
Material cover cap	Anodised wrought aluminium alloy
Material cover	Anodised wrought aluminium alloy
Material end plate	High alloy steel, non-corrosive
Material housing	Anodised wrought aluminium alloy
Material gripper jaws	High alloy steel
Material piston seal	TPE-U(PU)
Material o-ring	NBR
Material screws	Coated steel
Gear rack material	High alloy steel, non-corrosive