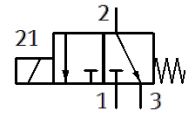
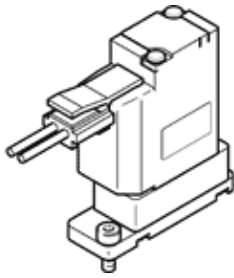


media separated solenoid valve VYKB-F10-M32-16-PF-5HPA

Part number: 8122809

FESTO



Data sheet

| Feature | Value |
|--|--|
| Design structure | Electrical connection at the side Rocker valve with diaphragm seal |
| Sealing principle | soft |
| Materials in contact with media | FFPM PEEK |
| Valve function | 3/2 open/closed, monostable |
| Nominal size | 1.6 mm |
| Flow direction | non reversible |
| Type of actuation | electrical |
| Type of piloting | direct |
| Type of reset | mechanical spring |
| Manual override | None |
| Assembly position | Any |
| Mounting type | With through-hole for M2 screw |
| Electrical connection 1, connection type | Cable with plug |
| Electrical connection 1, connection technology | Plug pattern HP |
| Size | 10 |
| Fluid connection | Flange |
| Medium | Fluid media Gaseous media |
| Information on the medium | Observe resistance of materials that come into contact with media Maximum particle size: 5 µm |
| Internal volume | 35 µl |
| Medium temperature | 0 ... 50 °C |
| Temperature of liquid media | 0 ... 50 °C |
| Ambient temperature | 0 ... 50 °C |
| Storage temperature | -20 ... 70 °C |
| Pressure of medium | -0.075 ... 0.1 MPa |
| Medium pressure | -0.75 ... 1 bar |
| Pressure of medium psi | -10.875 ... 14.5 psi |
| Overload pressure | 0.3 MPa 3 bar |
| Overload pressure (psi) | 43.5 psi |
| Operating voltage range DC | 12 V |
| Permissible voltage fluctuation | -5 % / +10 % |
| Characteristic coil data | 12 V DC: low-current phase 1 W, high-current phase 3.7 W |
| Duty cycle | 100 % |
| Max. switching frequency | 2 Hz |
| Switching time on | ≤ 20 ms |
| Switching time off | ≤ 20 ms |
| Flow rate Kv | 0.034 m ³ /h |
| Material housing | PEEK |
| Material membrane | FFPM |
| Material seals | FFPM |
| Materials note | Conforms to RoHS |
| PWIS conformity | VDMA24364 zone III |

| Feature | Value |
|--|---|
| Product weight | 18 g |
| Protection class | IP40 |
| Corrosion resistance classification CRC | 0 - No corrosion stress |
| CE symbol (see declaration of conformity) | according to EU-EMV guideline in accordance with EU RoHS directive |
| UKCA marking (see declaration of conformity) | To UK instructions for EMC To UK RoHS instructions |