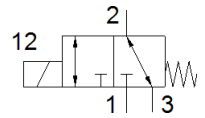
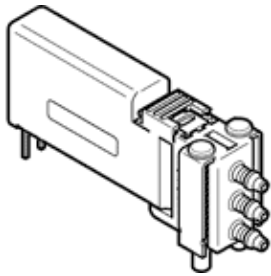


Solenoid valve

VOVK-BT6-M32C-MN-5T1P-B3F

Part number: 8122788

FESTO



Data sheet

Feature	Value
Valve function	3/2 closed, monostable
Type of actuation	electrical
Width	5.9 mm
Standard nominal flow rate	5.5 l/min
Operating pressure MPa	-0.1 ... 0.7 MPa
Working pressure	-1 ... 7 bar
Operating pressure	-14.5 ... 100 psi
Note on working pressure	Operating pressure at port 3: n.-1-0bar
Design structure	Connection direction to the front Poppet valve with spring return
Type of reset	mechanical spring
Protection class	IP40
Nominal size	0.36 mm
Exhaust-air function	throttleable
Sealing principle	soft
Assembly position	Any
Manual override	None
Type of piloting	electrical
Flow direction	reversible
Cv value	0.006 Gal/min US
Max. switching frequency	10 Hz
Switching time off	≤ 6 ms
Note on switching time off	At -1 < p < 6 bar
Switching time on	≤ 13 ms
Note on switching time on	≤ 6 ms at 0 < p < 6 bar, ≤ 13 ms at -1 < p < 0 bar
Duty cycle	100% within 500 h
Electrical power consumption	≤ 0.5 W
Nominal operating voltage DC	12 V
Permissible voltage fluctuation	+/- 10 %
Operating medium	Compressed air to ISO 8573-1:2010 [6:4:1]
Note on operating and pilot medium	Lubricated operation not possible
Corrosion resistance classification CRC	1 - Low corrosion stress
PWIS conformity	VDMA24364 zone III
Medium temperature	5 ... 50 °C
Relative air humidity	70 %
Information on relative air humidity	At ambient temperature
Ambient temperature	5 ... 50 °C
Product weight	4.5 g
Electrical connection	2-pin
Mounting type	with through hole
Pneumatic connection, port 1	For tubing internal diameter 1.5 mm
Pneumatic connection, port 3	For tubing internal diameter 1.5 mm
Materials note	Conforms to RoHS
Material housing	PBT
Material spring	High alloy steel, non-corrosive