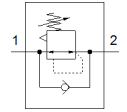
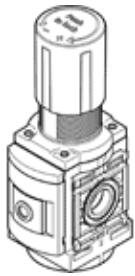


# Pressure regulator MS6-LR-1/2-D6-A8-B

Part number: 8099203

FESTO



## Data sheet

| Feature                                 | Value   |
|---|---|
| Size                                    | 6   |
| Series                                  | MS  |
| Actuator lock                           | Rotary knob with lock   |
| Assembly position                       | Any   |
| Design structure                        | Pressure regulator without pressure gauge<br>directly-controlled piston regulator |
| Controller function                     | Output pressure constant<br>with secondary exhaust<br>with return flow            |
| Pressure gauge                          | Prepared for G1/8   |
| Operating pressure MPa                  | 0.1 ... 1 MPa   |
| Working pressure                        | 1 ... 10 bar  |
| Pressure regulation range               | 0.3 ... 7 bar   |
| Max. pressure hysteresis (MPa)          | 0.035 MPa   |
| Max. pressure hysteresis                | 0.35 bar<br>5.075 psi   |
| Standard nominal flow rate              | 6,000 l/min   |
| Operating medium                        | Compressed air in accordance with ISO8573-1:2010 [7:4:4]<br>Inert gases           |
| Note on operating and pilot medium      | Lubricated operation possible (subsequently required for further operation)       |
| Corrosion resistance classification CRC | 1 - Low corrosion stress  |
| PWIS conformity                         | VDMA24364-B1/B2-L   |
| Cleanroom class                         | ISO class 7   |
| Storage temperature                     | -5 ... 50 °C  |
| Medium temperature                      | -5 ... 50 °C  |
| Ambient temperature                     | -5 ... 50 °C  |
| Product weight                          | 479 g   |
| Mounting type                           | Front panel installation<br>Line installation<br>with accessories<br>Optional     |
| Pneumatic connection, port 1            | G1/2  |
| Pneumatic connection, port 2            | G1/2  |
| Materials note                          | Conforms to RoHS  |
| Material underneath cover               | PA  |
| Material seals                          | NBR   |
| Material rotary knob                    | POM   |
| Material spring                         | High alloy steel<br>Galvanized steel  |
| Material housing                        | PA-reinforced   |
| Material valve stem                     | POM   |