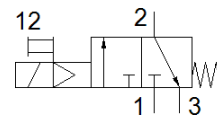


start valve MS6-EE-1/2-V24-B

Part number: 8091578

★ Core product range

FESTO



Data sheet

Feature	Value
Series	MS
Size	6
Grid dimension	62 mm
Design structure	Poppet valve, electrically actuated
Manual override	detenting Pushing
Type of reset	mechanical spring
Type of piloting	Piloted
Valve function	3/2 closed, monostable
Operating pressure MPa	0.3 ... 0.7 MPa
Working pressure	3 ... 7 bar
Standard nominal flow rate	5,000 l/min
Characteristic coil data	24VDC:2,3
Permissible voltage fluctuation	+/- 10 %
Switch-on time	29 ms
Operating medium	Compressed air in accordance with ISO8573-1:2010 [7:4:4]
Corrosion resistance classification CRC	1 - Low corrosion stress
Materials note	Conforms to RoHS
PWIS conformity	VDMA24364-B1/B2-L
Cleanroom class	ISO class 7
Medium temperature	-5 ... 50 °C
Protection class	IP65
Ambient temperature	-5 ... 50 °C
Mounting type	with wall/surface fixing
Assembly position	Vertical +/- 5°
Product weight	517 g
Pneumatic connection, port 1	G1/2
Pneumatic connection, port 2	G1/2
Pneumatic connection, port 3	G1/2
Pilot air supply	Internal
Electrical connection	Plug pattern type C to EN 175301-803 to EN 175301-803
Signal status display	with accessories
Material seals	HNBR NBR
Material housing	PA-reinforced