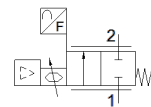
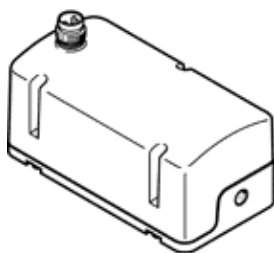


# Proportional flow control valve VEMD-L-6-14-20-D21-M5-1-R1-V4

Part number: 8086472

FESTO



## Data sheet

Feature	Value
Protection class	IP40
Note on degree of protection	IP51 with horizontal installation
Flow rate control range	0 ... 20 l/min
Note on the flow rate control range	The specified flow control range only applies at room temperature. Above room temperature, a reduction in the max. adjustable flow rate may occur.
Flow direction	non reversible
Operating pressure MPa	0 ... 0.25 MPa
Working pressure	0 ... 2.5 bar
Overload pressure	0.6 MPa 6 bar
Overload pressure (psi)	87 psi
Burst pressure	1 MPa
Bursting pressure	10 bar
Burst pressure	145 psi
Accuracy of flow rate	± (4% o.m.v. + 1,25% FS)
Repetition accuracy in ± %FS	1 %FS
Hysteresis FS	2.5 %FS
Linearity error, FS	2 %
Temperature coefficient	0.1 %/K
Valve function	2-way proportional flow control valve
Nominal size	1.4 mm
Pneumatic connection, port 1	Female thread M5
Pneumatic connection, port 2	Female thread M5
Medium	Compressed air to ISO 8573-1:2010 [5:4:1] Inert gases Oxygen (oxygen applications according to IEC 60601-1 only on request) Nitrogen
Information on the medium	Lubricated operation not possible
Special characteristics	Oxygen-compatible to DIN EN 1797
Ambient Conditions	Not suitable for use in an environment enriched with oxygen according to IEC 60601-1
Duty cycle	100 %
Medium temperature	5 ... 40 °C
Ambient temperature	0 ... 50 °C
Storage temperature	-20 ... 70 °C
Nominal operating voltage DC	24 V
Operating voltage range DC	22 ... 26.4 V
Max. current consumption	40 mA
Max. electrical power consumption	1 W
Electrical connection	4-pin M8x1, A-coded to EN 61076-2-104 Plug
Setpoint value	0,2 - 10 V
Signal range, analog input	0,2 - 10 V
Signal range, analog output	0,2 - 10 V
Polarity protected	For operating voltage connections

Feature	Value
Product weight	92 g
Material seals	EPDM NBR
Material cover	PA-reinforced
Materials note	Conforms to RoHS
Dimensions W x L x H	37 mm x 70 mm x 31 mm
Mounting type	Direct mounting via threads
Assembly position	Any
Authorization	RCM Mark
Conforms to standard	EN 61000-6-2 (EMC) EN 61000-6-3 (EMC)
KC mark	KC-EMV
CE symbol (see declaration of conformity)	according to EU-EMV guideline in accordance with EU RoHS directive
UKCA marking (see declaration of conformity)	To UK instructions for EMC To UK RoHS instructions
PWIS conformity	VDMA24364 zone III