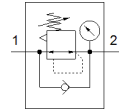
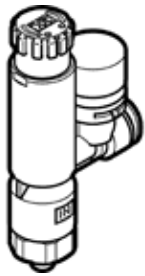


# Pressure regulator VRPA-LM-N14-T516

Part number: 8086017

FESTO



## Data sheet

| Feature                            | Value   |
|------------------------------------|---|
| Controller function                | Output pressure constant<br>with secondary exhaust<br>with return flow      |
| Pneumatic connection, port 1       | 1/4 NPT   |
| Pneumatic connection, port 2       | QS-5/16   |
| Mounting type                      | Threaded  |
| Standard nominal flow rate         | 130 l/min   |
| Ambient temperature                | 0 ... 60 °C   |
| Material housing                   | PBT   |
| Operating medium                   | Compressed air in accordance with ISO8573-1:2010 [7:4:4]                    |
| Assembly position                  | Any   |
| Type of actuation                  | manual  |
| Type of seal on screw-in stud      | coating   |
| Adjusting element                  | Rotary knob with lock   |
| Ability to swivel                  | 360° / no continuous swivelling permissible                                 |
| Pressure gauge                     | with pressure gauge   |
| Pressure regulation range MPa      | 0.1 ... 0.8 MPa   |
| Pressure regulation range          | 1 ... 8 bar   |
| Pressure regulation range psi      | 14.5 ... 116 psi  |
| Note on operating and pilot medium | Lubricated operation possible (subsequently required for further operation) |
| PWIS conformity                    | VDMA24364-B2-L  |
| Cleanroom class                    | ISO class 4   |
| Product weight                     | 50 g  |
| Material of threaded plug          | Nickel-plated brass   |
| Materials note                     | Conforms to RoHS  |
| Material of threaded seal          | PTFE  |
| Material static seals              | NBR   |