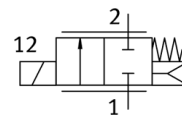
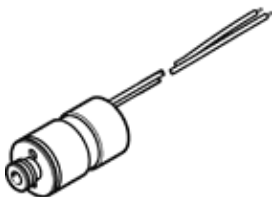


Proportional directional control valve VPWS-6-B-6-PC15-3-V

Part number: 8074537

FESTO



Data sheet

Feature	Value
Nominal size	6 mm
Type of actuation	electrical
Sealing principle	soft
Assembly position	Any
Design structure	Directly actuated poppet valve
Type of reset	mechanical spring
Type of piloting	direct
Flow direction	non reversible
Valve function	2/2-proportional directional control valve closed
Operating pressure MPa	0 ... 0.3 MPa
Working pressure	0 ... 3 bar
Nominal operating pressure	0.2 MPa
Nominal working pressure	2 bar
Nominal operating pressure (psi)	29 psi
Burst pressure	15 bar
Bursting pressure	15 bar
Burst pressure	217.5 psi
Standard flow rate	200 ... 220 l/min
Hysteresis	22.5 mA
Switching time on	10 ms
Current regulating range	0 ... 225 mA
Max. electrical power consumption	3 W
Coil resistance	60.5 Ohm
Duty cycle	100% (see assembly instructions)
Report number for VOC emission test according to ISO 18562-3	FE_2021-450
Report number for particle emission according to ISO 18562-2	PAR_041_2022
Report number for surface cleanliness	FE_2021-498
Oxygen suitability according to standard	ISO 15001
Maximum impurity level for hydrocarbons	500 mg/m ²
Corrosion resistance classification CRC	1 - Low corrosion stress
PWIS conformity	VDMA24364 zone III
Medium	Inert gases Air Oxygen
Information on the medium	Lubricated operation not possible Maximum particle size 10 µm
Medium temperature	5 ... 50 °C
Protection class	IP60
Note on degree of protection	IP65 with suitable plug in assembled condition
Ambient temperature	5 ... 50 °C
Storage temperature	-40 ... 80 °C
Product weight	25 g
Electrical connection 1, connection type	Cable
Electrical connection 1, connection technology	Open end
Electrical connection 1, number of pins/wires	2

Feature	Value
Cable length	70 ... 80 mm
Mounting type	On subbase Plug-in with accessories
Pneumatic connection, port 1	Cartridge 7.5 mm
Pneumatic connection, port 2	Cartridge 15 mm
Materials note	Conforms to RoHS
Material seals	FPM
Material housing	High alloy steel