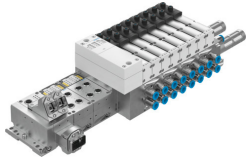


Valve manifold VTSA-F-CB

Part number: 8073100

FESTO



Data sheet

Feature	Value
Electrical actuation	Ethernet Fieldbus Integrated controller
Electrical I/O system	yes
Valve terminal type	46
Operating medium	Compressed air as per ISO 8573-1:2010 [7:4:4]
Pilot medium	Compressed air as per ISO 8573-1:2010 [7:4:4]
Information on operating and pilot media	Operation with oil lubrication not possible
Ambient temperature	-5 °C...50 °C
Storage temperature	-20 °C...60 °C
Relative air humidity	0 - 90 %
Degree of protection	IP65
Corrosion resistance class (CRC)	0 - No corrosion stress
Operating pressure	-0.09 MPa...1 MPa -0.9 bar...10 bar
Pilot pressure	3 bar...10 bar
Operating pressure for valve manifold with internal pilot air supply	0.3 MPa...1 MPa 3 bar...10 bar 43.5 psi...145 psi
LABS (PWIS) conformity	VDMA24364-B1/B2-L
CE marking (see declaration of conformity)	As per EU EMC directive
KC characters	KC EMC
Certification	c UL us - Recognized (OL)
Certificate issuing authority	UL E322346
Note on materials	RoHS-compliant
Valve manifold design	Modular, pneumatic valve sizes can be mixed
Manual override	Detenting Detenting via accessory Non-detenting Covered Self-resetting via electrical control signal
Number of voltage zones	6
Number of controllable coils per voltage zone	24
Number of controllable coils per valve manifold	96

Feature	Value
Actuation type	Electrical
Valve function	2x2/2 closed, monostable 2x3/2, closed, monostable 2x3/2, open, monostable 2x3/2, open/closed, monostable 5/2, bistable 5/2, bistable, dominant 5/2, monostable 5/3, pressurized 5/3, exhausted 5/3, closed 5/3, connection 2 pressurized, 4 exhausted
Structural design	Piston gate valve
Valve size	18 mm 26 mm 42 mm 52 mm
Pilot air supply port	External Internal
Max. standard nominal flow rate	700 l/min at 18 mm 1350 l/min at 26 mm 1860 l/min at 42 mm 2900 l/min at 52 mm
Suitability for vacuum	yes
Exhaust air function	Via throttle plate
Pneumatic working port	QS-6 QS-8 QS-10 QS-12 QS-16
Pilot air port 12	Ducted optionally:
Note on forced dynamization	Switching frequency at least once a month
Signal status display	LED
Nominal operating voltage DC	24 V
Permissible voltage fluctuations	+/- 10 %
Max. power supply	11 A