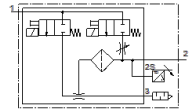
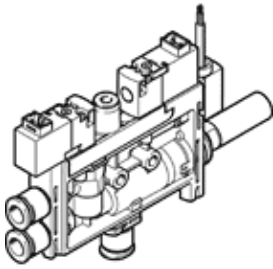


Vacuum generator

OVEL-7-H-15-PQ-VQ4-UA-C-A-B2V-H3

Part number: 8069568

FESTO



Data sheet

| Feature | Value |
|--|---|
| Nominal size, Laval nozzle | 0.7 mm |
| Grid dimension | 15 mm |
| Design, silencer | open |
| Assembly position | Any |
| Ejector characteristic | High vacuum Standard |
| Grade of filtration | 40 µm |
| Manual override | Pushing |
| Integrated function | Ejector pulse, electrical Flow control valve Pressure transmitter Electrical on-off valve Filter Open silencer |
| Design structure | T-shaped |
| Valve function | closed |
| Measurement method | Piezoresistive pressure sensor |
| Operating pressure for max. suction rate (MPa) | 0.4 MPa |
| Working pressure for max. suction rate | 4 bar |
| Operating pressure for max. suction rate (psi) | 58 psi |
| Operating pressure MPa | 0.2 ... 0.7 MPa |
| Working pressure | 2 ... 7 bar |
| Operating pressure | 29 ... 101.5 psi |
| Operating pressure for max. vacuum (MPa) | 0.45 MPa |
| Working pressure for max. vacuum | 4.5 bar |
| Operating pressure for max. vacuum (psi) | 65.25 psi |
| Max. vacuum | 92 % |
| Nominal operating pressure | 0.4 MPa |
| Nominal working pressure | 4 bar |
| Nominal operating pressure (psi) | 58 psi |
| Max. suction rate with respect to atmosphere | 17 l/min |
| Air supply time at nominal operating pressure with ejector pulse | 1.2 s |
| Analog output | 0 - 10 V |
| Operating voltage range DC | 21.6 ... 26.4 V |
| Duty cycle | 100 % |
| Characteristic coil data | 24 V DC: 1 W |
| Authorization | c UL us - Listed (OL) |
| KC mark | KC-EMV |
| CE symbol (see declaration of conformity) | according to EU-EMV guideline |
| UKCA marking (see declaration of conformity) | To UK instructions for EMC |
| Operating medium | Compressed air in accordance with ISO8573-1:2010 [7:4:4] |
| Note on operating and pilot medium | Lubricated operation not possible |
| Corrosion resistance classification CRC | 2 - Moderate corrosion stress |
| PWIS conformity | VDMA24364-B1/B2-L |
| Medium temperature | 0 ... 50 °C |
| Noise level at nominal operating pressure | 61 dB(A) |

| Feature | Value |
|--|------------------------------------|
| Protection class | IP40 |
| Ambient temperature | 0 ... 50 °C |
| Product weight | 88 g |
| Operating voltage range, DC sensor | 18 ... 30 V |
| Pressure measurement range | -0.1 ... 0.1 MPa |
| Pressure measuring range | -1 ... 1 bar |
| Pressure measurement range | -14.5 ... 14.5 psi |
| Electrical connection, input, function | Ejector pulse Vacuum generation |
| Electrical connection, input, connection type | 2x plug |
| Electrical connection, input, connection technology | Connection pattern H |
| Electrical connection, input, number of pins/wires | 2 |
| Electrical connection, input, type of mounting | Snap-in locking |
| Electrical connection, output, function | Sensor |
| Electrical connection, output, connection type | Cable |
| Electrical connection, output, connection technology | Open end |
| Electrical connection, output, number of pins/wires | 3 |
| Cable attribute | Suitable for energy chains |
| Cable diameter | 2.9 mm |
| Cable diameter tolerance | ± 0,1 mm |
| Cable length | 2.5 m |
| Nominal conductor cross-section | 0.14 mm ² |
| Mounting type | with through hole |
| Pneumatic connection, port 1 | For tubing outside diameter 4 mm |
| Pneumatic connection, port 3 | Open silencer |
| Vacuum connection | For tubing outside diameter 4 mm |
| Cable sheath color | Grey |
| Material of connecting thread | POM |
| Materials note | Conforms to RoHS |
| Material seals | NBR |
| Material receiver nozzle | POM |
| Material filter | POM |
| Material housing | PA-reinforced |
| Material cable sheath | PVC |
| Material adjusting screw | Steel |
| Material silencer | PA-reinforced PE |
| Material screws | Steel |
| Material transmitter nozzle | Wrought Aluminum alloy |