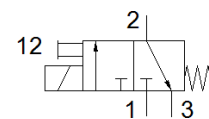


# Solenoid valve

## VSCS-B-M32-MD-WA-1C1-8

Part number: 8040570

FESTO



### Data sheet

Feature	Value
Valve function	3/2 closed, monostable
Type of actuation	electrical
Width	15 mm
Standard nominal flow rate	13.5 l/min
Operating pressure MPa	0.15 ... 0.8 MPa
Working pressure	1.5 ... 8 bar
Operating pressure	21.75 ... 116 psi
Type of reset	mechanical spring
Protection class	IP65
Sealing principle	soft
Assembly position	Any
Conforms to standard	ISO 15218
Manual override	detenting Pushing
Type of piloting	direct
Flow direction	non reversible
Lap	Underlap
Note on forced dynamisation	Switching frequency at least once a week
Switching time off	6 ms
Switching time on	8 ms
Duty cycle	100 %
Characteristic coil data	24 V DC: 1.3 W
Permissible voltage fluctuation	+/- 10 %
Operating medium	Compressed air in accordance with ISO8573-1:2010 [7:4:4]
Note on operating and pilot medium	Lubricated operation possible (subsequently required for further operation)
Vibration resistance	Transport application test with severity level 1 as per FN 942017-4 and EN 60068-2-6
Shock resistance	Shock test with severity level 1 in accordance with FN 942017-5 and EN 60068-2-27
Corrosion resistance classification CRC	2 - Moderate corrosion stress
PWIS conformity	VDMA24364-C1-L
Medium temperature	-5 ... 50 °C
Ambient temperature	-5 ... 50 °C
Electrical connection	Plug pattern type C to EN 175301-803 Per DIN EN 175301-803
Pneumatic connection, port 1	Subbase
Pneumatic connection, port 2	Subbase
Pneumatic connection, port 3	Subbase
Materials note	Conforms to RoHS
Material seals	NBR