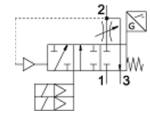
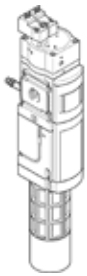


Soft start/quick exhaust valve MS6-SV-1/2-D-10V24-20E-SO-AG

Part number: 8038492

FESTO



Data sheet

| Feature | Value |
|---|---|
| Series | MS |
| Size | 6 |
| Grid dimension | 62 mm |
| Safety function | Exhausting Prevention of unexpected start-up (pressurisation) |
| Safety Integrity Level (SIL) | Exhausting / SIL 3 Prevention of unexpected start-up (pressurisation)/SIL 3 |
| Performance level (PL) | Exhaust/category 3, Performance Level d Prevention of unexpected start-up (pressurisation)/category 3, Performance Level d |
| Note on forced dynamisation | Switching frequency min. 1/month |
| Design structure | Piston seat |
| Freedom from overlap | No |
| Type of actuation | electrical |
| Pilot air supply | Internal |
| Sealing principle | soft |
| Exhaust-air function | not throttleable |
| Position sensing principle | Solenoid actuator principle |
| Conforms to standard | DIN EN ISO 13849-1 DIN EN ISO 13849-2 |
| Manual override | None |
| Type of reset | mechanical spring |
| Type of piloting | Piloted |
| Valve function | 3/2 closed, monostable Pressure build-up function |
| Operating pressure MPa | 0.35 ... 1 MPa |
| Working pressure | 3.5 ... 10 bar |
| Pressure gauge | with pressure gauge |
| C value | 19.3 l/sbar |
| b value | 0.21 |
| Standard nominal flow rate | 4,300 l/min |
| Standard flow rate exhaust 0.6->0 MPa (6->0 bar, 87->0 psi) | 9,000 l/min |
| Max. switching frequency | 0.5 Hz |
| Switching time off | 40 ms |
| Switching time on | 130 ms |
| Duty cycle | 100 % |
| Signal status display | LED Switching outputs |
| Characteristic coil data | 24 V DC: 1.8 W |
| Nominal operating voltage DC | 24 V |
| Permissible voltage fluctuation | +10 % / -15 % |
| Operating medium | Compressed air in accordance with ISO8573-1:2010 [7:4:4] |
| Note on operating and pilot medium | Lubricated operation possible (subsequently required for further operation) |
| Corrosion resistance classification CRC | 2 - Moderate corrosion stress |
| Materials note | Conforms to RoHS |

| Feature | Value |
|---|--|
| PWIS conformity | VDMA24364-B1/B2-L |
| Sound pressure level | 75 dB(A) |
| Protection class | IP65 with plug socket |
| Medium temperature | -10 ... 50 °C |
| Ambient temperature | -10 ... 50 °C |
| Storage temperature | -10 ... 50 °C |
| Shock resistance | Shock test with severity level 2 in accordance with FN 942017-5 and EN 60068-2-27 |
| Vibration resistance | Transport application test at severity level 2 in accordance with FN 942017-4 and EN 60068-2-6 |
| Authorization | RCM Mark |
| KC mark | KC-EMV |
| CE symbol (see declaration of conformity) | according to EU machines guideline |
| Mounting type | Line installation with accessories Optional |
| Assembly position | Any |
| Product weight | 1,900 g |
| Pneumatic connection, port 1 | G1/2 |
| Pneumatic connection, port 2 | G1/2 |
| Pneumatic connection, port 3 | G1 |
| Electrical connection | 2-pin 2x plug Plug pattern type C to EN 175301-803 to EN 175301-803 |
| Electrical connection, proximity sensor | 2x cable 3-core |
| Material housing | Aluminum die cast |
| Material seals | NBR |
| Material piston rod | High alloy steel, non-corrosive |