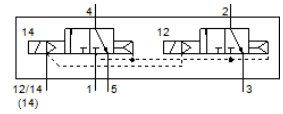


# Solenoid valve

## VSVA-B-T32C-AZ-A2-1T1L

Part number: 8033480

FESTO



## Data sheet

Feature	Value
Valve function	2x3/2 closed, monostable
Type of actuation	electrical
Width	18 mm
Standard nominal flow rate	400 l/min
Operating pressure MPa	0.3 ... 1 MPa
Working pressure	3 ... 10 bar
Design structure	Piston slide
Authorization	c UL us - Recognized (OL)
Protection class	IP65 NEMA 4
Exhaust-air function	throttleable Via throttle plate Via individual sub-base
Sealing principle	soft
Assembly position	Any
Manual override	Covered
Type of piloting	Piloted
Pilot air supply	external Internal
Flow direction	non reversible
Lap	Positive overlap
Signal status display	LED
Pilot pressure MPa	0.3 ... 1 MPa
Pilot pressure	3 ... 10 bar
Flow rate of valve	600 l/min
Flow rate of valve on individual subbase	500 l/min
Optimized flow rate of valve pneumatically concatenated flow	550 l/min
Flow rate of pneumatically linked valve	400 l/min
Switching time off	30 ms
Switching time on	12 ms
Duty cycle	100 %
Max. positive test pulse with logic 0	1,700 µs
Max. negative test pulse with logic 1	1,200 µs
Max. current consumption	60 mA
Nominal operating voltage DC	24 V
Characteristic coil data	24 V DC: 1.3 W
Surge strength	2.5 kV
Degree of contamination	3
Permissible voltage fluctuation	+/- 10 %
Operating medium	Compressed air in accordance with ISO8573-1:2010 [7:4:4]
Note on operating and pilot medium	Lubricated operation possible (subsequently required for further operation)
Vibration resistance	Transport application test at severity level 2 in accordance with FN 942017-4 and EN 60068-2-6
Shock resistance	Shock test with severity level 2 in accordance with FN 942017-5 and EN 60068-2-27

<b>Feature</b>	<b>Value</b>
Corrosion resistance classification CRC	0 - No corrosion stress
PWIS conformity	VDMA24364-B1/B2-L
Relative air humidity	0 - 90 %
Pilot medium	Compressed air in accordance with ISO8573-1:2010 [7:4:4]
Ambient temperature	-5 ... 50 °C
Product weight	190 g
Electrical connection	Plug-in according to ISO 15407-2
Mounting type	On subbase
Auxiliary pilot air port 12/14	Manifold block, size 18 mm acc. to ISO 15407-2
Pilot exhaust port 82/84	Optional Not ducted as per standard Ducted
Pneumatic connection, port 1	Manifold block, size 18 mm acc. to ISO 15407-2
Pneumatic connection, port 2	Manifold block, size 18 mm acc. to ISO 15407-2
Pneumatic connection, port 3	Manifold block, size 18 mm acc. to ISO 15407-2
Pneumatic connection, port 4	Manifold block, size 18 mm acc. to ISO 15407-2
Pneumatic connection, port 5	Manifold block, size 18 mm acc. to ISO 15407-2
Materials note	Conforms to RoHS
Material seals	FPM HNBR NBR
Material housing	Aluminum die cast PA
Material screws	Galvanized steel