

# Filter regulator

## LFR-1/4-D-5M-MINI-A-MPA

Part number: 8002325

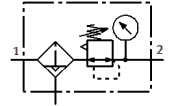
Classic - do not use for new projects

With metal bowl guard and pressure gauge, degree of filtration 5 µm.

With automatic condensate drain.

Modern alternatives can be found by entering the first four characters of the type code in the search field.

FESTO



### Data sheet

| Feature                                 | Value   |
|---|---|
| Size                                    | Mini  |
| Series                                  | D   |
| Actuator lock                           | Rotary knob with lock   |
| Assembly position                       | Vertical +/- 5°   |
| Grade of filtration                     | 5 µm  |
| Condensate drain                        | fully automatic   |
| Design structure                        | Filter regulator with pressure gauge  |
| Max. condensate volume                  | 22 cm <sup>3</sup>  |
| Bowl guard                              | Metal bowl guard  |
| Pressure gauge                          | with pressure gauge   |
| Working pressure                        | 2 ... 12 bar  |
| Pressure regulation range               | 0.5 ... 12 bar  |
| Max. pressure hysteresis                | 0.2 bar   |
| Standard nominal flow rate              | 1,200 l/min   |
| Operating medium                        | Compressed air to ISO 8573-1:2010 [7:9:-]<br>Inert gases                    |
| Note on operating and pilot medium      | Lubricated operation possible (subsequently required for further operation) |
| Corrosion resistance classification CRC | 2 - Moderate corrosion stress   |
| PWIS conformity                         | VDMA24364-B1/B2-L   |
| Storage temperature                     | -10 ... 60 °C   |
| Air purity class at output              | Compressed air in accordance with ISO8573-1:2010 [6:8:4]<br>Inert gases     |
| Medium temperature                      | 5 ... 60 °C   |
| Ambient temperature                     | 5 ... 60 °C   |
| Product weight                          | 460 g   |
| Mounting type                           | Line installation<br>with accessories<br>Optional                           |
| Pneumatic connection, port 1            | G1/4  |
| Pneumatic connection, port 2            | G1/4  |
| Materials note                          | Conforms to RoHS  |
| Material housing                        | Zinc die-casting  |
| Material bowl                           | PC  |