

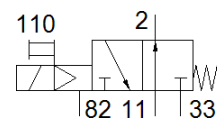
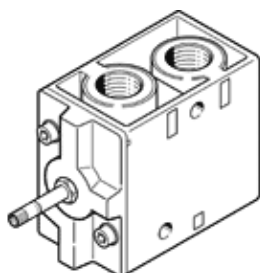
Solenoid valve

MOFH-3-1/2

Part number: 7884

FESTO

With manual override, without solenoid coil or socket. Solenoid coil and socket should be ordered separately.



Data sheet

| Feature | Value |
|---|---|
| Valve function | 3/2 open, monostable |
| Type of actuation | electrical |
| Width | 52 mm |
| Standard nominal flow rate | 3,700 l/min |
| Operating pressure MPa | 0.15 ... 0.8 MPa |
| Working pressure | 1.5 ... 8 bar |
| Design structure | Poppet seat |
| Type of reset | mechanical spring |
| Authorization | c UL us - Recognized (OL) |
| Protection class | IP65 |
| Nominal size | 14 mm |
| Grid dimension | 69 mm |
| Exhaust-air function | throttleable |
| Sealing principle | soft |
| Assembly position | Any |
| Manual override | detenting |
| Type of piloting | Piloted |
| Flow direction | non reversible |
| Lap | Underlap |
| b value | 0.3 |
| Switching time off | 90 ms |
| Switching time on | 18 ms |
| Max. positive test pulse with logic 0 | 2,200 µs |
| Max. negative test pulse with logic 1 | 3,700 µs |
| Characteristic coil data | See solenoid coil, to be ordered separately |
| Operating medium | Compressed air in accordance with ISO8573-1:2010 [7:4:4] |
| Note on operating and pilot medium | Lubricated operation possible (subsequently required for further operation) |
| Corrosion resistance classification CRC | 1 - Low corrosion stress |
| PWIS conformity | VDMA24364-B1/B2-L |
| Storage temperature | -20 ... 60 °C |
| Medium temperature | -10 ... 60 °C |
| Ambient temperature | -5 ... 40 °C |
| Product weight | 1,100 g |
| Electrical connection | Via F coil, must be ordered separately |
| Mounting type | on manifold rail with through hole Optional |
| Pilot exhaust port 82 | M5 |
| Pneumatic connection, port 1 | G1/2 |
| Pneumatic connection, 11 | G1/2 |
| Pneumatic connection, port 2 | G1/2 |
| Pneumatic connection, port 3 | G1/2 |
| Pneumatic connection, 33 | G1/2 |
| Materials note | Conforms to RoHS |
| Material seals | NBR |
| Material housing | Aluminum die cast |