

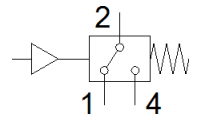
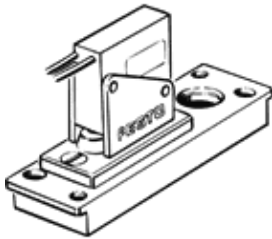
# PE converter

## PE-1/8-2N-SW

Part number: 7862

FESTO

Pneumatic/electrical signal converter.



## Data sheet

Feature	Value
Conforms to standard	EN 60947-5-1
CE symbol (see declaration of conformity)	according to EU low voltage guideline
UKCA marking (see declaration of conformity)	To UK instructions for electrical equipment
Measured variable	Relative pressure
Measurement method	Pneu./elect. pressure transducer
Operating pressure MPa	0 ... 0.8 MPa
Working pressure	0 ... 8 bar
Overload range	12 bar
Operating medium	Compressed air in accordance with ISO8573-1:2010 [7:4:4]
Note on operating and pilot medium	Lubricated operation possible
Medium temperature	0 ... 60 °C
Ambient temperature	0 ... 60 °C
Switch output	Contact-type
Switching function	Threshold value with fixed hysteresis
Switching element function	Changeover switch
Switch-on point maximum	2 bar
Switch-off point minimum	0.5 bar
Max. switching frequency	1 Hz
Minimum load current	100 mA
Operating voltage range AC	12 ... 250 V
Operating voltage range DC	12 ... 250 V
Utilization category for inductive load	AC-14 DC-13
Utilization category for ohmic load	AC-12 DC-12
Electrical connection	3 connecting wires
Electrical connection 1, connection technology	Open end
Cable length	0.5 m
Material cable sheath	PVC
Mounting type	on mounting frame 2n with through hole Optional
Assembly position	Any
Pneumatic connection	G1/8
Product weight	65 g
Material housing	Aluminum die cast PA-reinforced Steel VMQ (silicon)
Material switch contact	silver
Material electrical connection	Galvanized
Material membrane	TPE-U(PU)
Setting options	Permanently set
Protection class	IP67
Insulation voltage	2 kV
PWIS conformity	VDMA24364-B1/B2-L
Degree of contamination	3