

Stem actuated valve

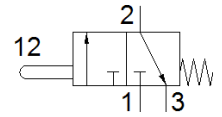
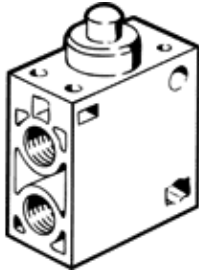
V-3-1/4-B

Part number: 6808

FESTO

Normally closed.

This type is suitable for vacuum. Vacuum connection at port 1 (P).



Data sheet

| Feature | Value |
|------------------------------|------------------------|
| Valve function | 3/2 closed, monostable |
| Type of actuation | mechanical |
| Standard nominal flow rate | 600 l/min |
| Working pressure | -0.95 ... 10 bar |
| Design structure | Poppet seat |
| Nominal size | 7 mm |
| Type of piloting | direct |
| PWIS conformity | VDMA24364-B1/B2-L |
| Ambient temperature | -10 ... 60 °C |
| Actuating force | 70 N |
| Product weight | 130 g |
| Mounting type | with through hole |
| Pneumatic connection, port 1 | G1/4 |
| Pneumatic connection, port 2 | G1/4 |
| Pneumatic connection, port 3 | G1/4 |
| Material seals | NBR |
| Material housing | Aluminum die cast |