

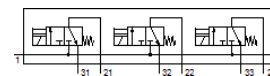
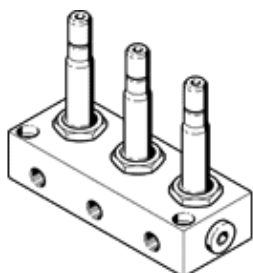
Solenoid valve

BMCH-3-3-1/8

Part number: 6687

FESTO

This type is suitable for vacuum.



Data sheet

Feature	Value
Valve function	3x3/2 closed, monostable
Type of actuation	electrical
Standard nominal flow rate	160 l/min
Operating pressure MPa	-0.095 ... 0.7 MPa
Working pressure	-0.95 ... 7 bar
Design structure	Poppet valve with spring return
Type of reset	mechanical spring
Protection class	IP65
Nominal size	2.5 mm
Sealing principle	soft
Max. number of valve positions	3
Type of piloting	direct
Suitability for vacuum	Yes
Power consumption, pick-up	30 W
Power consumption, hold	22 W
Operating medium	Compressed air in accordance with ISO8573-1:2010 [7:4:4]
Note on operating and pilot medium	Lubricated operation possible (subsequently required for further operation)
PWIS conformity	VDMA24364-B2-L
Medium temperature	-10 ... 60 °C
Ambient temperature	-5 ... 40 °C
Product weight	1,010 g
Electrical connection	Plug
Mounting type	with through hole
Pneumatic connection, port 1	G1/4
Pneumatic connection, port 2	G1/8
Pneumatic connection, port 3	G1/8
Material housing	Aluminum