

Solenoid valve

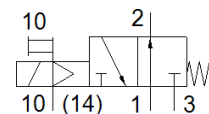
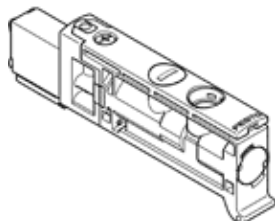
VUVB-ST12-M32U-MZD-QX-1T1

Part number: 576003

Classic - do not use for new projects

FESTO

Modern alternatives can be found by entering the first four characters of the type code in the search field.



Data sheet

Feature	Value
Valve function	3/2 open, monostable
Type of actuation	electrical
Valve size	12 mm
Standard nominal flow rate	240 ... 400 l/min
Operating pressure MPa	0.28 ... 0.8 MPa
Working pressure	2.8 ... 8 bar
Design structure	Poppet valve with spring return
Protection class	IP65
Nominal size	4 mm
Exhaust-air function	not throttleable
Sealing principle	soft
Assembly position	Any
Manual override	detenting Pushing
Type of piloting	Piloted
Pilot air supply	external
Flow direction	non reversible
Note on working pressure	0 - 0.8 MPa with external pilot air 0 - 8 bar with external pilot air
Pilot pressure MPa	0.28 ... 0.8 MPa
Pilot pressure	2.8 ... 8 bar
Switching time off	14 ms
Switching time on	6 ms
Duty cycle	100 %
Max. positive test pulse with logic 0	800 µs
Max. negative test pulse with logic 1	300 µs
Characteristic coil data	24 V DC: 1 W
Permissible voltage fluctuation	+/- 10 %
Operating medium	Compressed air in accordance with ISO8573-1:2010 [7:4:4]
Note on operating and pilot medium	Lubricated operation possible (subsequently required for further operation)
Vibration resistance	Transport application test with severity level 1 as per FN 942017-4 and EN 60068-2-6
Shock resistance	Shock test with severity level 1 in accordance with FN 942017-5 and EN 60068-2-27
Corrosion resistance classification CRC	0 - No corrosion stress
PWIS conformity	VDMA24364-B1/B2-L
Medium temperature	-5 ... 60 °C
Sound pressure level	85 dB(A)
Ambient temperature	-5 ... 60 °C
Product weight	28.1 g
Electrical connection	via manifold block
Mounting type	On subbase

Feature	Value
Auxiliary pilot air port 14	Subbase
Pneumatic connection, port 1	Subbase
Pneumatic connection, port 3	Subbase
Pneumatic connection, port 5	Subbase
Materials note	Conforms to RoHS
Material seals	NBR TPE-U(PU)
Material housing	PA-reinforced
Material Piston slide	Wrought Aluminum alloy