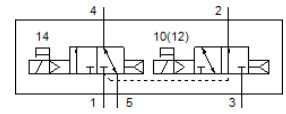
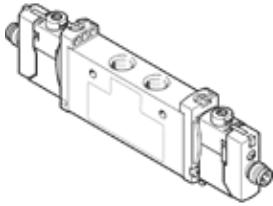


Solenoid valve

VUVG-L14-T32H-AT-G18-1R8L

Part number: 574228

FESTO



Data sheet

| Feature | Value |
|--|--|
| Valve function | 2x3/2 open/closed, monostable |
| Type of actuation | electrical |
| Valve size | 14 mm |
| Standard nominal flow rate | 580 ... 590 l/min |
| Operating pressure MPa | 0.15 ... 0.8 MPa |
| Working pressure | 1.5 ... 8 bar |
| Design structure | Piston slide |
| Type of reset | Air spring |
| Authorization | RCM Mark c UL us - Recognized (OL) |
| Protection class | IP65 with plug socket |
| Nominal size | 4.6 mm |
| Exhaust-air function | throttleable |
| Sealing principle | soft |
| Assembly position | Any |
| Manual override | detenting Pushing Covered |
| Type of piloting | Piloted |
| Pilot air supply | Internal |
| Lap | Positive overlap |
| Pilot pressure MPa | 0.15 ... 0.8 MPa |
| Pilot pressure | 1.5 ... 8 bar |
| Suitability for vacuum | No |
| Switching time off | 25 ms |
| Switching time on | 9 ms |
| Duty cycle | 100 % |
| Max. positive test pulse with logic 0 | 700 µs |
| Max. negative test pulse with logic 1 | 900 µs |
| Characteristic coil data | 24 V DC: 1 W |
| Permissible voltage fluctuation | +/- 10 % |
| Operating medium | Compressed air in accordance with ISO8573-1:2010 [7:4:4] |
| Note on operating and pilot medium | Lubricated operation possible (subsequently required for further operation) |
| Vibration resistance | Transport application test at severity level 2 in accordance with FN 942017-4 and EN 60068-2-6 |
| Restriction ambient and medium temperature | Without holding current reduction -5 - 50 °C |
| Shock resistance | Shock test with severity level 2 in accordance with FN 942017-5 and EN 60068-2-27 |
| Corrosion resistance classification CRC | 2 - Moderate corrosion stress |
| PWIS conformity | VDMA24364-B1/B2-L |
| Medium temperature | -5 ... 60 °C |
| Ambient temperature | -5 ... 60 °C |
| Product weight | 89 g |

| Feature | Value |
|------------------------------|---|
| Electrical connection | Via electrical connection plate |
| Mounting type | on manifold rail with through hole Optional |
| Pneumatic connection, port 1 | G1/8 |
| Pneumatic connection, port 2 | G1/8 |
| Pneumatic connection, port 3 | G1/8 |
| Pneumatic connection, port 4 | G1/8 |
| Pneumatic connection, port 5 | G1/8 |
| Materials note | Conforms to RoHS |
| Material seals | HNBR NBR |
| Material housing | Wrought Aluminum alloy |