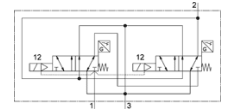
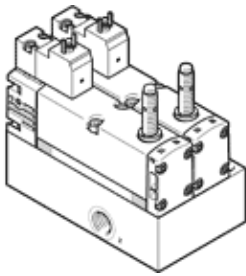


# Control block VOFA-L26-T32C-M-G14-1C1-APP

Part number: 574011

FESTO



## Data sheet

Feature	Value
Valve function	3/2 closed, monostable
Type of actuation	electrical
Width	65 mm
Standard nominal flow rate	1,050 l/min
Operating pressure MPa	0.3 ... 1 MPa
Working pressure	3 ... 10 bar
Design structure	Piston slide
Type of reset	mechanical spring
Protection class	IP65 NEMA 4
Authorization	c UL us - Recognized (OL)
KC mark	KC-EMV
CE symbol (see declaration of conformity)	according to EU-EMV guideline according to EU machines guideline
UKCA marking (see declaration of conformity)	To UK instructions for EMC To UK instructions for machines
Certificate issuing department	UL MH19482
Exhaust-air function	throttleable
Sealing principle	soft
Assembly position	Any
Conforms to standard	EN 60947-5-2
Manual override	None
Type of piloting	Piloted
Pilot air supply	Internal
Flow direction	non reversible
Measuring principle	Inductive
Lap	Positive overlap
Reverse polarity protection sensor	For all electrical connections
Safety function	Exhausting Manipulation/start-up protection
Performance level (PL)	Vent/up to Category 4, PL e Protection against manipulation, prevention of unexpected start-up, up to Category 4, Performance Level e
Note on forced dynamisation	Switching frequency at least once a week
Signal status display	with accessories
Switching position sensing	Normal position with sensor
Switching status display sensor	LED
Pilot pressure MPa	0.3 ... 1 MPa
Pilot pressure	3 ... 10 bar
Suitability for vacuum	No
Standard flow rate exhaust 0.6->0 MPa (6->0 bar, 87->0 psi)	2,650 l/min
Standard flow rate exhaust 0.6->0 MPa (6->0 bar, 87->0 psi) in the event of a fault	1,050 l/min
Switching time off	54 ms
Switching time on	24 ms
Valve - sensor switching time on	58 ms

<b>Feature</b>	<b>Value</b>
Valve - sensor switching time off	11 ms
Duty cycle	100 %
Max. positive test pulse with logic 0	1,000 µs
Max. negative test pulse with logic 1	800 µs
Switch output	PNP
Characteristic coil data	24 V DC: 1.8 W
Permissible voltage fluctuation	-15 % / +10 %
Operating medium	Compressed air in accordance with ISO8573-1:2010 [7:4:4]
Note on operating and pilot medium	Lubricated operation possible (subsequently required for further operation)
Vibration resistance	Transport application test at severity level 2 in accordance with FN 942017-4 and EN 60068-2-6
Shock resistance	Shock test with severity level 2 in accordance with FN 942017-5 and EN 60068-2-27
Corrosion resistance classification CRC	0 - No corrosion stress
PWIS conformity	VDMA24364-B1/B2-L
Max. magnetic interference field	60 mT
Medium temperature	-5 ... 50 °C
Sound pressure level	85 dB(A)
Protection against direct and indirect contact	Safety extra-low voltage with safe disconnection (PELV) Protected to EN 60950/IEC 950
Pilot medium	Compressed air in accordance with ISO8573-1:2010 [7:4:4]
Ambient temperature	-5 ... 50 °C
Nominal altitude of use	1000 m in accordance with VDE 0580
Product weight	1,134 g
Operating voltage range, DC sensor	10 ... 30 V
Short-circuit strength sensor	Pulsing
Idle current sensor	≤ 10 mA
Max. output current sensor	200 mA
Max. switching frequency sensor	5,000 Hz
Residual ripple sensor	± 10 %
Voltage drop sensor	≤ 2 V
Electrical connection	Plug pattern type C to EN 175301-803 to EN 175301-803 Without mains earth
Sensor connection	Plug 3-pin M8x1
Mounting type	with through hole
Pneumatic connection, port 1	G1/4
Pneumatic connection, port 2	G1/4
Pneumatic connection, port 3	G1/4
Materials note	Conforms to RoHS
Material seals	FPM HNBR NBR
Material housing	Aluminum die cast PA
Material screws	Galvanized steel
Switching element function	Normally closed contact