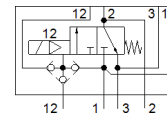
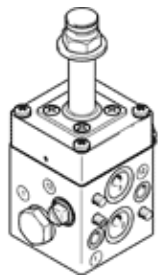


Basic valve

VOFC-L-M32C-MC-FGP14-F9-A

Part number: 570788

FESTO



Data sheet

Feature	Value
Valve function	3/2 closed, monostable
Type of actuation	electrical
Width	51 mm
Standard nominal flow rate	600 l/min
Working pressure	2 ... 8 bar
Design structure	Pilot-actuated piston poppet valve
Type of reset	mechanical spring
Protection class	IP65
Nominal size	6 mm
Sealing principle	soft
Assembly position	Any
Manual override	None
Type of piloting	Piloted
Pilot air supply	Internal
Flow direction	non reversible
Safety Integrity Level (SIL)	up to SIL4 High Demand mode up to SIL4 Low Demand mode
Flow rate Kv ventilation	0.5 m3/h
Flow rate Kv exhaust	0.65 m3/h
Switching time off	12 ms
Switching time on	20 ms
Duty cycle	100%
Operating medium	Compressed air in accordance with ISO8573-1:2010 [-:~:]
Corrosion resistance classification CRC	4
Medium temperature	-25 ... 60 °C
Ambient temperature	-25 ... 60 °C
Product weight	550 g
Pneumatic connection, port 1	NAMUR port pattern
Pneumatic connection, port 2	NAMUR port pattern
Pneumatic connection, port 3	G1/4
Pneumatic connection, port 4	NAMUR port pattern
Materials note	Contains PWIS substances Conforms to RoHS
Materials information for seals	NBR
Materials information, housing	Aluminum Hard Ematal plated