

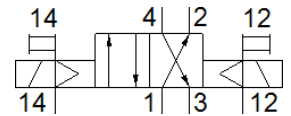
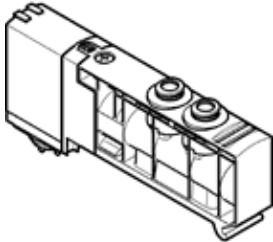
Solenoid valve

VUVB-S-B42-ZD-T38-1T1L

Part number: 568622

FESTO

This product is only available if ordered from the Festo Corporation, USA.
This type is suitable for vacuum.



Data sheet

Feature	Value
Valve function	4/2 bistable
Type of actuation	electrical
Valve size	20 mm
Standard nominal flow rate	1,000 l/min
Working pressure	-0.9 ... 8 bar
Design structure	Piston slide
Protection class	IP65
Nominal size	7 mm
Exhaust-air function	not throttleable
Sealing principle	soft
Assembly position	Any
Manual override	Pushing
Type of piloting	Piloted
Pilot air supply	external
Flow direction	non reversible
Pilot pressure	2 ... 8 bar
Switching time reversal	25 ms
Characteristic coil data	24 V DC: low-current phase 0.1 W, high-current phase 3.3 W
Surge strength	0.8 kV
Degree of contamination	3
Permissible voltage fluctuation	+/- 10 %
Operating medium	Compressed air in accordance with ISO8573-1:2010 [7:4:4]
Note on operating and pilot medium	Lubricated operation possible (subsequently required for further operation)
CE symbol (see declaration of conformity)	according to EU-EMV guideline
Corrosion resistance classification CRC	1
Storage temperature	-20 ... 40 °C
Medium temperature	-5 ... 50 °C
Ambient temperature	-5 ... 50 °C
Max. tightening torque, valve mounting	2 Nm
Product weight	220 g
Electrical connection	Socket for multi-pin plug
Mounting type	with through hole
Auxiliary pilot air port 12/14	Subbase
Pilot exhaust port 84	Non-ducted
Pneumatic connection, port 1	Subbase
Pneumatic connection, port 2	QS-3/8
Pneumatic connection, port 3	Subbase
Pneumatic connection, port 4	QS-3/8
Materials note	Free of copper and PTFE Conforms to RoHS
Materials information for seals	FPM HNBR NBR
Materials information, housing	PA-reinforced
Material information, piston spool	Wrought Aluminum alloy