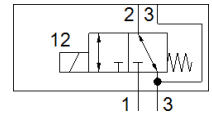
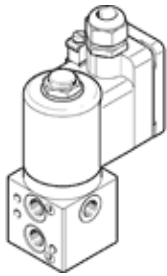


# Solenoid valve

## VOFD-LT-M32-MN-FG14-1UK4-EX4ME

Part number: 562886

FESTO



### Data sheet

Feature	Value
Valve function	3/2 closed, monostable
Type of actuation	electrical
Width	51 mm
Standard nominal flow rate	450 l/min
Working pressure	0 ... 10 bar
Design structure	Directly actuated poppet valve
Type of reset	mechanical spring
Protection class	IP65
Nominal size	5 mm
Sealing principle	soft
Assembly position	Any
Manual override	None
Type of piloting	direct
Flow direction	non reversible
Safety Integrity Level (SIL)	bis SIL 3 High Demand mode bis SIL 3 Low Demand mode
Suitability for vacuum	Yes
Flow rate Kv ventilation	0.36 m <sup>3</sup> /h
Flow rate Kv exhaust	0.36 m <sup>3</sup> /h
Switching time off	9 ms
Switching time on	45 ms
Duty cycle	100%
Characteristic coil data	24 V AC: 3.5 VA 24 V DC: 3.5 W
Permissible voltage fluctuation	-15 % / +10 %
ATEX category Gas	II 2G
Explosion ignition protection type Gas	Ex emb II T6, T5
ATEX category Dust	II 2D
Explosion ignition protection type Dust	Ex tD A21 IP65 T80°C, T95°C
Explosion-proof ambient temperature	T80°C: -20°C ≤ Ta ≤ +50°C T95°C: -20°C ≤ Ta ≤ +60°C
Certificate issuing department	PTB 08 ATEX 2033 X
Operating medium	Compressed air in accordance with ISO8573-1:2010 [-:-:-]
CE symbol (see declaration of conformity)	according to EU-Ex protection guideline (ATEX)
Extended ambient temperature	-25 - 60 °C Low Demand mode
Corrosion resistance classification CRC	4
Medium temperature	-10 ... 60 °C
Ambient temperature	-10 ... 60 °C
Product weight	1,140 g
Electrical connection	Terminal box, cable entry thread M20x1.5
Pneumatic connection, port 1	G1/4
Pneumatic connection, port 2	G1/4 NAMUR port pattern
Pneumatic connection, port 3	G1/4
Pneumatic connection, port 4	NAMUR port pattern

<b>Feature</b>	<b>Value</b>
Materials note	Contains PWIS substances Conforms to RoHS
Materials information for seals	NBR
Materials information, housing	Aluminum Hard Ematal plated