

# Gearbox

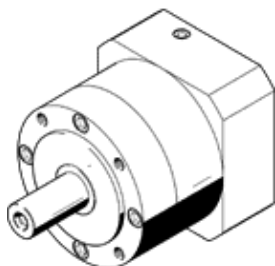
## EMGA-120-P-G5-SAS-100

Part number: 552197

★ Core product range

Suitable for servo motors.

FESTO



### Data sheet

Feature	Value
Gear unit flange size	120 mm
Motor flange size	100 mm
Torsional backlash	0.12 deg
Type of gear unit	Planetary gear unit
Gear unit ratio	5:1
Max. input speed	6,500 1/min
Temperature range of gear unit	-25 ... 90 °C
PWIS conformity	VDMA24364-B2-L
Protection class	IP54
Continuous output torque	195 Nm
Mass moment of inertia of gear unit	1.53 kgcm <sup>2</sup>
Max. output torque	312 Nm
Max. efficiency	98 %
Torsional resistance	12 Nm/arcmin
Product weight	6,000 g
Gear unit interface, output shaft	120G
Gear unit interface, drive shaft	100A
Materials note	Conforms to RoHS